

J-1W Wide Arch

- ▶ Same face-to-face as J-1
- ▶ Up to 3x more movement
- ▶ Less force required to move
- ▶ Saves space over multiple arch J-1
- ▶ Multiple wide arch available
- ▶ Made in U.S.A.



Redflex® J-1W Wide Arch Expansion Joints are engineered to permit greater movement capabilities than standard J-1 Expansion Joints. J-1W Expansion Joints can be used to alleviate more extreme expansion and compression stresses, without the need for double or triple arches, since the J-1W has the **same face-to-face dimensions as the standard J-1 Single Arch Expansion Joint**. The wide arch design also reduces the amount of force required to cause movement in the expansion joint while allowing the J-1W to be used under the same working pressures as the standard J-1. These features and benefits of the J-1W Wide Arch Expansion Joint result in a cost savings for both new installations and for replacement operations.

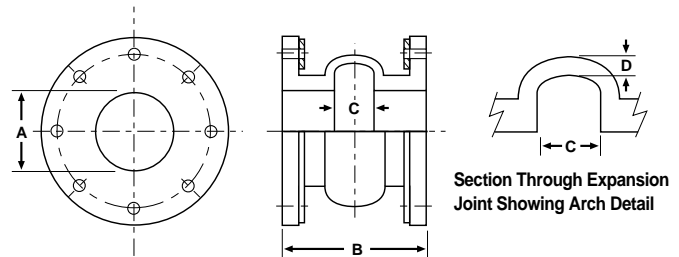
Materials of Construction

▶ ELASTOMERS

Pure Gum Rubber, Neoprene, Hypalon®, Chlorobutyl, Buna-N, EPDM, and Viton®

▶ VACUUM RATING

15 in. Hg. — Full Vacuum Available



Dimensions and Movement J-1W Wide Arch Expansion Joint

Size A	B	C	D	Axial Compress	Force Pounds to Move	Axial Elongation	Force Pounds to Move	Lateral Deflection	Force Pounds to Move	Working Pressure (psi)
*1"	6"	2"	1"	1-3/4"	144	3/4"	106	3/4"	245	165
*1-1/4"	6"	2"	1"	1-3/4"	180	3/4"	134	3/4"	306	165
*1-1/2"	6"	2"	1"	1-3/4"	216	3/4"	161	3/4"	367	165
*2"	6"	2"	1"	1-3/4"	130	3/4"	97	3/4"	245	165
2-1/2"	6"	2"	1"	1-3/4"	162	3/4"	120	3/4"	267	165
3"	6"	2"	1"	1-3/4"	195	3/4"	145	3/4"	288	165
4"	6"	2"	1"	1-3/4"	260	3/4"	193	3/4"	333	165
5"	6"	2"	1"	1-3/4"	324	3/4"	241	3/4"	382	140
6"	6"	2"	1"	1-3/4"	389	3/4"	289	1"	432	140
8"	6"	2"	1"	1-3/4"	777	3/4"	482	1"	527	140
10"	8"	2"	1"	1-3/4"	850	3/4"	603	1"	566	140
12"	8"	2"	1"	1-3/4"	892	3/4"	633	1"	664	140
14"	8"	3"	1-1/4"	2"	1019	7/8"	723	1-1/8"	782	85
16"	8"	3"	1-1/4"	2"	1019	7/8"	723	1-1/8"	900	65
18"	8"	3"	1-1/4"	2"	1147	7/8"	814	1-1/8"	994	65
20"	8"	3"	1-1/4"	2"	1506	7/8"	1054	1-1/8"	1112	65
24"	10"	3"	1-1/4"	2"	1807	1"	1265	1-1/8"	1194	65
26"	10"	3"	1-1/4"	2"	**	1"	**	1-1/8"	**	55
28"	10"	3"	1-1/4"	2"	**	1"	**	1-1/8"	**	55
30"	10"	3"	1-1/4"	2"	**	1"	**	1-1/8"	**	55
36"	10"	3"	1-1/4"	2"	**	1"	**	1-1/8"	**	55
42"	12"	3"	1-1/4"	2"	**	1"	**	1-1/8"	**	55
48"	12"	3"	1-1/4"	2"	**	1"	**	1-1/8"	**	55
54"	12"	3"	1-1/4"	2"	**	1"	**	1-1/8"	**	55

*Filled Arch Only
On larger sizes, consult factory.