

SureCross® Quick Start Guide for Performance P6 Node and M12FTH4Q Temperature/Humidity Sensor



The Performance -P6 Node and temperature/humidity sensor are designed to work together. The sensor is available in two versions: the FTH4Q senses temperature and humidity while the FT4Q model senses only temperature.

This is a plug-and-play battery-powered solution that offers a battery life of more than four years.

Step 1: Connect Sensor and Node

Plug the sensor into the Node.



Step 2: Apply power to the Node

The Node ships from the factory with the battery installed, but the Node is in storage mode. To turn the Node on, press and hold button 1 for five seconds.

The LEDs start to blink and the display begins to cycle through the menu system.



Step 3: Read the Temperature and Humidity on the LCD

After the Node exits Storage Mode, it cycles through the *RUN menu, displaying the following information:

Display	Description
*RUN	Indicates the device is displaying the RUN menu
NID 1	Not used
<DEV> NOD1	Displays the Node address, in this case, 01 using the rotary dials
I/O1 55.0 RH	Relative Humidity %
I/O2 25.2C	Temperature in Celsius
I/O3 77.4F	Temperature in Fahrenheit

If this information is not displayed, the Node is not in within the *RUN menu. Press button 1 to cycle through menu options until you reach the *RUN menu.

Step 4: Bind the P6 Node to its Gateway

Before binding the Node to its Gateway, first verify the Gateway is powered. After the Gateway is powered up, follow these steps:

1. On the Gateway, triple-click button 2.
Both LEDs flash red.
2. On the -P6 Node, verify the rotary dials are set to 01.
3. On the -P6 Node, triple-click button 2.
Both LEDs flash red.
4. After the Node completes the biding procedure, it automatically exits binding mode and enters Run mode.
5. On the Gateway, double-click button 2 to exit binding mode.

Step 5: Check the remote data using the Gateway's LCD

The Gateway display can be use to view the nodes *RUN menu. This is done by setting the rotary dials on the Gateway to the Node address you want to view (in this example, 01). The information is identical to what you see at the Node.

Display	Description
*RUN :	Indicates the device is displaying the RUN menu
NID 1	Not used
<DEV> NOD1	Displays the Node address, in this case, 01 using the rotary dials
I/O1 55.0 RH	Relative Humidity %
I/O2 25.2C	Temperature Celsius
I/O3 77.4F	Temperature in Fahrenheit

If this information is not displayed, the Gateway is not in within the *RUN menu. Press button 1 to cycle through menu options until you reach the *RUN menu.

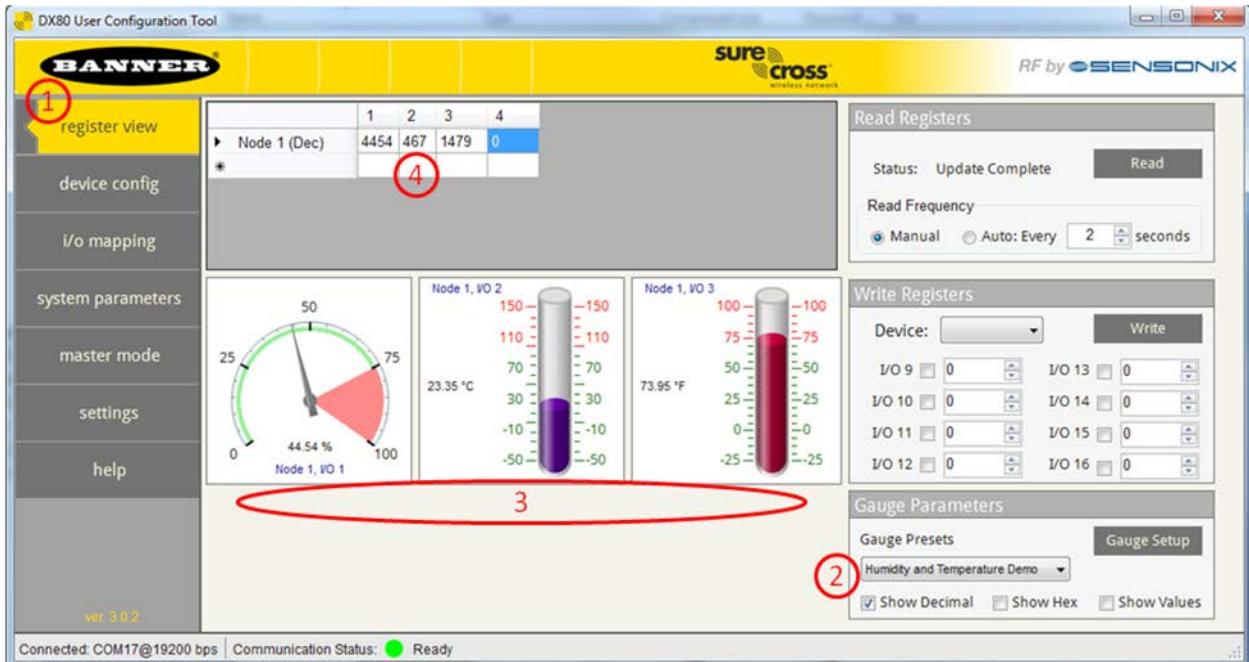
Step 6 (optional): Check the remote data at the Gateway using Modbus RTU

The information from the Nodes is available via Modbus RTU registers. The easiest way to display the I/O information is using the User Configuration Tool (UCT) software.

Download the UCT software from this Web page: http://www.bannerengineering.com/en-US/wireless/surecross_web_software.

After downloading the software, use a USB to RS-485 adapter cable, model BWA-UCT-900, to connect the Gateway to your computer and launch the UCT software.

1. Select the Register View tab at upper left.
2. Select the temperature humidity demo.
3. Displays the Humidity, Temp C, and Temp F for Node 1 graphically.
4. Displays the raw humidity and temperature data.
 - a. Register 1 shows 4454. Divide by 100 to get 44.54% Relative Humidity
 - b. Register 2 shows 467. Divide by 20 to get 23.35 °C
 - c. Register 3 shows 1479. Divide by 20 to get 73.95 °F



SureCross® Quick Start Guide for Performance -P6 Node and M12TFH4Q Temperature/Humidity Sensor



more sensors, more solutions

Banner Engineering Corp. warrants its products to be free from defects in material and workmanship for one year following the date of shipment. Banner Engineering Corp. will repair or replace, free of charge, any product of its manufacture which, at the time it is returned to the factory, is found to have been defective during the warranty period. This warranty does not cover damage or liability for misuse, abuse, or the improper application of the Banner product.

THIS LIMITED WARRANTY IS EXCLUSIVE AND IN LIEU OF ALL OTHER WARRANTIES WHETHER EXPRESS OR IMPLIED (INCLUDING, WITHOUT LIMITATION, ANY WARRANTY OF MERCHANTABILITY OR FITNESS FOR A PARTICULAR PURPOSE), AND WHETHER ARISING UNDER COURSE OF PERFORMANCE, COURSE OF DEALING OR TRADE USAGE.

This Warranty is exclusive and limited to repair or, at the discretion of Banner Engineering Corp., replacement. **IN NO EVENT SHALL BANNER ENGINEERING CORP. BE LIABLE TO BUYER OR ANY OTHER PERSON OR ENTITY FOR ANY EXTRA COSTS, EXPENSES, LOSSES, LOSS OF PROFITS, OR ANY INCIDENTAL, CONSEQUENTIAL OR SPECIAL DAMAGES RESULTING FROM ANY PRODUCT DEFECT OR FROM THE USE OR INABILITY TO USE THE PRODUCT, WHETHER ARISING IN CONTRACT OR WARRANTY, STATUTE, TORT, STRICT LIABILITY, NEGLIGENCE, OR OTHERWISE.**

Banner Engineering Corp. reserves the right to change, modify or improve the design of the product without assuming any obligations or liabilities relating to any product previously manufactured by Banner Engineering Corp.

The manufacturer does not take responsibility for the violation of any warning listed in this document.



CAUTION. Make no modifications to this product. Any modifications to this product not expressly approved by Banner Engineering could void the user's authority to operate the product. Contact the Factory for more information.

Lightning Arrestors/Surge Protection. Always use lightning arrestors/surge protection with all remote antenna systems to avoid invalidating the Banner Engineering Corp. warranty. No surge protector can absorb all lightning strikes. Do not touch the SureCross device or any equipment connected to the SureCross device during a thunderstorm.

All specifications published in this document are subject to change. Banner reserves the right to modify the specifications of products, prior to their order, without notice. Banner Engineering reserves the right to update or change documentation at any time. For the most recent version of any documentation, please refer to our website: www.bannerengineering.com. © 2006-2013 Banner Engineering Corp. All rights reserved.

P/N 173557 Rev. A