



MODEL M1700

OPEN FLOWMETER

DESCRIPTION

Model M1700 Open Flowmeters are designed to measure the flow in canal outlets, discharge and inlet pipes, irrigation turnouts and other similar installations. The M1700 series meets or exceeds the American Water Works Association Standard C704-02. Constructed of stainless steel, the meter incorporates bronze mounting brackets that permit simple installation and removal. As with all McCrometer propeller flowmeters, standard features include a magnetically coupled drive, instantaneous flowrate indicator and straight reading, six-digit totalizer.

Impellers are manufactured of high-impact plastic, designed to retain both shape and accuracy over the life of the meter. Each impeller is individually calibrated at the factory to accommodate the use of standard McCrometer registers, and since no change gears are necessary, the M1700 can be field-serviced without the need for factory recalibration. Factory lubricated, stainless steel bearings are used to support the impeller shaft. The sealed bearing design limits the entry of materials and fluids into the bearing chamber providing maximum bearing protection.

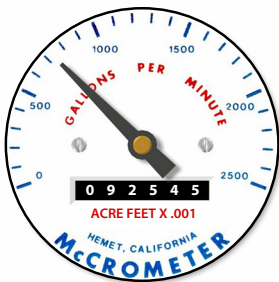
An instantaneous flowrate indicator is standard and available in gallons per minute, cubic feet per second, liters per second and other units. The register is driven by a flexible steel cable encased within a protective, self-lubricating vinyl liner. The die-cast aluminum register housing protects both the register and cable drive system from moisture while allowing clear reading of the flowrate indicator and totalizer.

INSTALLATION

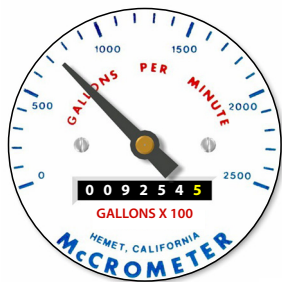
The M1700 must be mounted on a headwall, standpipe or other suitable structure so that the propeller is located in the center of the discharge or inlet pipe. A straight run of full pipe the length of ten pipe diameters upstream and two diameters downstream of the meter is recommended for meters without straightening vanes. Meters with optional straightening vanes require at least five pipe diameters upstream of the meter. Please specify the inside diameter of the pipe when ordering.

The Mc Propeller flow meter comes with a standard instantaneous flowrate indicator and straight-reading totalizer. An optional FlowCom register is also available.

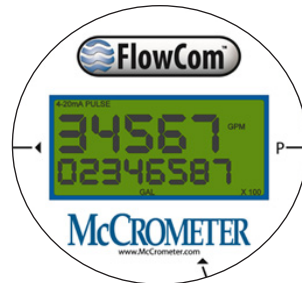
Typical face plates.



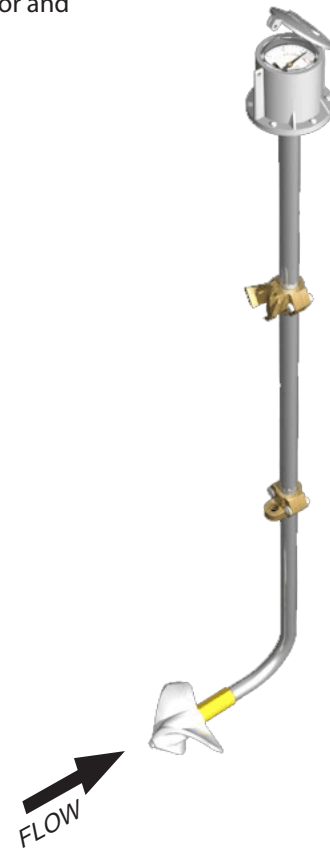
Standard register



Optional 7-wheel totalizer



FlowCom register



APPLICATIONS

The McCrometer propeller meter is the most widely used flowmeter for municipal water and wastewater applications as well as agricultural and turf irrigation measurements.

Typical applications include:

- Water and wastewater management
- Canal laterals
- Gravity turnouts from underground pipelines
- Sprinkler irrigation systems
- Golf course and park water management



3255 WEST STETSON AVENUE • HEMET, CALIFORNIA 92545 USA

TEL: 951-652-6811 • 800-220-2279 • FAX: 951-652-3078 Printed In The U.S.A. Lit. # 24517-14 Rev. 1.9 / 8-22-18

Copyright © 2001-2017 McCrometer, Inc. All printed material should not be changed or altered without permission of McCrometer. Any published pricing, technical data, and instructions are subject to change without notice. Contact your McCrometer representative for current pricing, technical data, and instructions.



MODEL M1700

OPEN FLOWMETER

PERFORMANCE

ACCURACY/REPEATABILITY: ±2% of reading guaranteed throughout full range. ±1% over reduced range. Repeatability 0.25% or better.

MAXIMUM TEMPERATURE: (Standard Construction) 160°F constant

MATERIALS

BEARING ASSEMBLY: Impeller shaft is 316 stainless steel. Ball bearings are 440C stainless steel.

DROP PIPE: 304 stainless steel construction

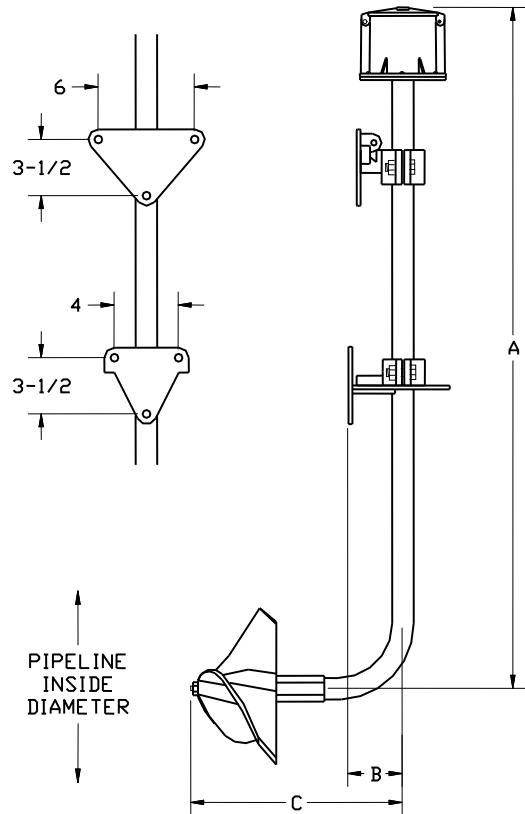
REGISTER: An instantaneous flowrate indicator and six-digit straight-reading totalizer are standard. The register is hermetically sealed within a die cast aluminum case. This protective housing includes a domed acrylic lens and hinged cover with locking hasp.

IMPELLER: Impellers are manufactured of high-impact plastic, retaining their shape and accuracy over the life of the meter.

OPTIONS

- Register extensions
- All stainless steel bearing assembly
- "Over Run" bearing assembly for higher than normal flowrates
- Electronic propeller meter available in all sizes of this model
- A complete line of flow recording/control instrumentation
- Extra wall brackets
- Canopy boot

IMPORTANT
Open Flowmeters larger than 24" require a FlowCom.



M1700	DIMENSIONS													
Meter Size (inches)	10	12	14	16	18	20	24	30	36	42	48	54	60	72
Maximum Flow U.S. GPM	1800	2500	3000	4000	5000	6000	8500	12500	17000	22000	30000	36000	42000	60000
Minimum Flow U.S. GPM	125	150	250	275	400	475	700	1200	1500	2200	2800	3500	4000	6000
Approx. Head Loss in Inches at Maximum Flow	3.75	2.75	2.00	1.75	1.50	1.20	1.00	.52	.40	-	-	-	-	-
Approx. Shipping Weight Crated - lbs.	120	120	120	120	140	140	140	140	140	250	250	250	250	250
A * (in feet)	5	5	5	5	6	6	6	6	6	10	10	10	10	10
B Regular Brackets (inches)	2 13/16									4 3/8				
B Universal Brackets (inches)	3 15/16									-				
C (inches)	14 3/4	14 3/4	14 3/4	14 3/4	17	17	17	17	17	21 1/2	21 1/2	21 1/2	21 1/2	21 1/2

* Standard lengths, optional lengths in 12" increments per customer order



3255 WEST STETSON AVENUE • HEMET, CALIFORNIA 92545 USA

TEL: 951-652-6811 • 800-220-2279 • FAX: 951-652-3078 Printed In The U.S.A. Lit. # 24517-14 Rev. 1.9 / 8-22-18

Copyright © 2001-2017 McCrometer, Inc. All printed material should not be changed or altered without permission of McCrometer. Any published pricing, technical data, and instructions are subject to change without notice. Contact your McCrometer representative for current pricing, technical data, and instructions.