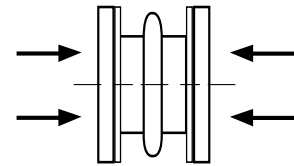


J-1 Movement Data

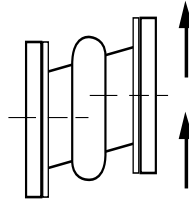
Allowable Movement

Size	Single Arch				Double Arch				Triple Arch			
	F-F	Compress	Extension	Deflection	F-F	Compress	Extension	Deflection	F-F	Compress	Extension	Deflection
*1"	6"	7/16"	1/4"	1/2"	10"	7/8"	1/2"	1"	12"	1-3/16"	3/4"	1-1/2"
*1-1/2"	6"	7/16"	1/4"	1/2"	10"	7/8"	1/2"	1"	12"	1-3/16"	3/4"	1-1/2"
*2"	6"	7/16"	1/4"	1/2"	10"	7/8"	1/2"	1"	12"	1-3/16"	3/4"	1-1/2"
2-1/2"	6"	7/16"	1/4"	1/2"	10"	7/8"	1/2"	1"	12"	1-3/16"	3/4"	1-1/2"
3"	6"	7/16"	1/4"	1/2"	10"	7/8"	1/2"	1"	12"	1-3/16"	3/4"	1-1/2"
4"	6"	7/16"	1/4"	1/2"	10"	7/8"	1/2"	1"	12"	1-3/16"	3/4"	1-1/2"
5"	6"	7/16"	1/4"	1/2"	10"	7/8"	1/2"	1"	12"	1-3/16"	3/4"	1-1/2"
6"	6"	7/16"	1/4"	1/2"	10"	7/8"	1/2"	1"	12"	1-3/16"	3/4"	1-1/2"
8"	6"	11/16"	3/8"	1/2"	10"	1-3/8"	3/4"	1"	14"	2-1/16"	1-1/8"	1-1/2"
10"	8"	11/16"	3/8"	1/2"	12"	1-3/8"	3/4"	1"	16"	2-1/16"	1-1/8"	1-1/2"
12"	8"	11/16"	3/8"	1/2"	12"	1-3/8"	3/4"	1"	16"	2-1/16"	1-1/8"	1-1/2"
14"	8"	11/16"	3/8"	1/2"	12"	1-3/8"	3/4"	1"	16"	2-1/16"	1-1/8"	1-1/2"
16"	8"	11/16"	3/8"	1/2"	12"	1-3/8"	3/4"	1"	16"	2-1/16"	1-1/8"	1-1/2"
18"	8"	11/16"	3/8"	1/2"	12"	1-3/8"	3/4"	1"	16"	2-1/16"	1-1/8"	1-1/2"
20"	8"	13/16"	7/16"	1/2"	12"	1-5/8"	7/8"	1"	16"	2-7/16"	1-5/16"	1-1/2"
24"	10"	13/16"	7/16"	1/2"	14"	1-5/8"	7/8"	1"	18"	2-7/16"	1-5/16"	1-1/2"
30"	10"	15/16"	1/2"	1/2"	14"	1-7/8"	1"	1"	18"	2-13/16"	1-1/2"	1-1/2"
36"	10"	15/16"	1/2"	1/2"	14"	1-7/8"	1"	1"	18"	2-13/16"	1-1/2"	1-1/2"
42"	12"	1"	9/16"	1/2"	14"	2"	1-1/8"	1"	20"	3"	1-11/16"	1-1/2"
48"	12"	1"	9/16"	1/2"	16"	2"	1-1/8"	1"	20"	3"	1-11/16"	1-1/2"
54"	12"	1"	9/16"	1/2"	16"	2"	1-1/8"	1"	20"	3"	1-11/16"	1-1/2"
60"	12"	1"	9/16"	1/2"	16"	2"	1-1/8"	1"	20"	3"	1-11/16"	1-1/2"
72"	12"	1"	9/16"	1/2"	16"	2"	1-1/8"	1"	20"	3"	1-11/16"	1-1/2"
84"	12"	1"	9/16"	1/2"	16"	2"	1-1/8"	1"	20"	3"	1-11/16"	1-1/2"
90"	12"	1"	9/16"	1/2"	16"	2"	1-1/8"	1"	20"	3"	1-11/16"	1-1/2"
96"	12"	1"	9/16"	1/2"	16"	2"	1-1/8"	1"	20"	3"	1-11/16"	1-1/2"
108"	12"	1"	9/16"	1/2"	16"	2"	1-1/8"	1"	20"	3"	1-11/16"	1-1/2"

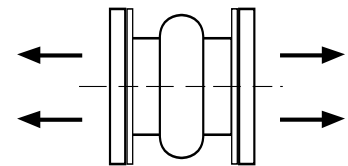
Types of Movement



Axial Compression



Lateral Deflection



Axial Extension

NOTE: Allowable movement is reduced by 50% with filled arches. *Available with filled arches only.

Force Pounds to Cause Movement

Size	Compress	Extend	Deflect
*1"	103	76	175
*1-1/2"	154	115	262
2"	185	138	350
2-1/2"	232	172	381
3"	278	207	412
4"	371	276	476
5"	463	344	546
6"	556	413	617
8"	971	689	753
10"	1214	861	809
12"	1456	1033	948
14"	1274	904	1117
16"	1456	1033	1286
18"	1638	1163	1420
20"	2152	1505	1588
24"	2582	1807	1706
30"	3311	2297	2075
36"	3973	2756	3164
42"	4732	3253	3423
48"	5408	3717	3866
54"	6085	4182	4303
60"	6761	4651	4736
72"	8113	5581	5477
84"	9465	6511	6425
90"	6085	4182	4303
96"	10817	7441	7375
108"	12169	8372	8325

Forces to compress, deflect, and elongate the J-1 Expansion Joints are based upon zero pressure conditions. This data should be used as approximate only. The force to deflect an expansion joint is defined as the total load required to deflect the expansion joint a distance equal to the maximum rated movement of the product. This force figure is expressed in pounds for compression, elongation, and lateral movements.