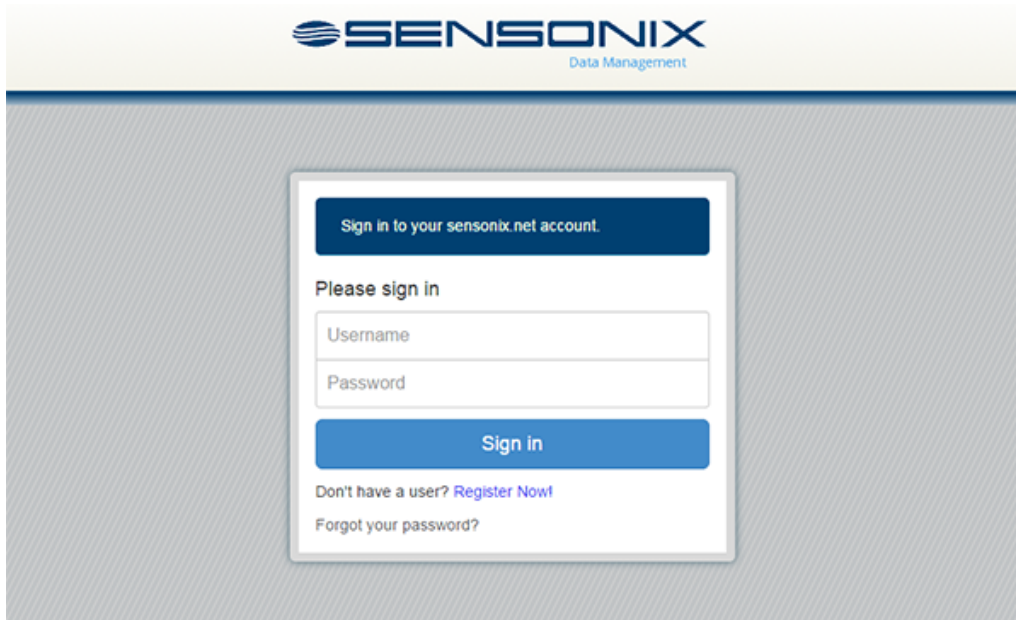


Quick Start Guide

Logging into the Sensonix Web Services

The web server captures data from the device and allows users to collect and view the data or update and manage the device using a web browser. The data is sent to the web site using either a cellular connection or an Ethernet connection.

A company login will be created with a login and password. Use both the web site and the DXM Configuration Tool to set up and configure your data collection. Use Internet Explorer or Google Chrome as your Internet browser and enter the URL: <https://data.sensonix.net/login.aspx>. The login page appears.

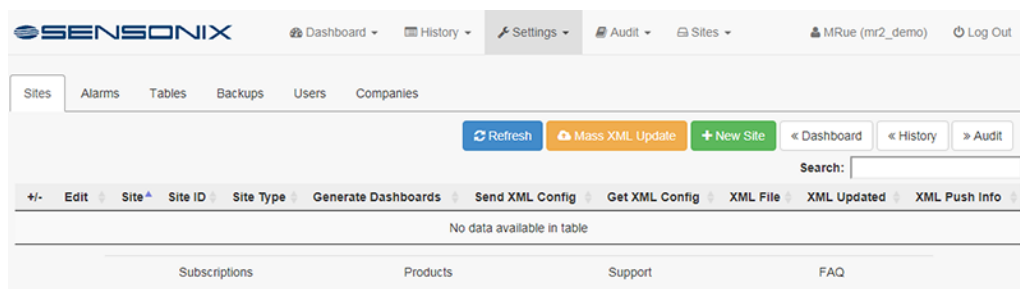


Create a New Site

After you log into the site, go to **Settings** > Sites.

1. Click on +New Site.
Create a new site for each DXM that will be sending data to the web server.
2. Enter a site name.
3. Copy the Site ID number shown on the dashboard.

The Site ID number created by the web server is used by the DXM Configuration Tool when you create the configuration XML file for the device. The Site ID is the address the webserver uses to store the data pushed from the device.



Modifying the XML Configuration File

Use the DXM Configuration Tool to configure the operation of the device. For more help on all the capabilities of the configuration platform, refer to the DXM Configuration Tool manual.

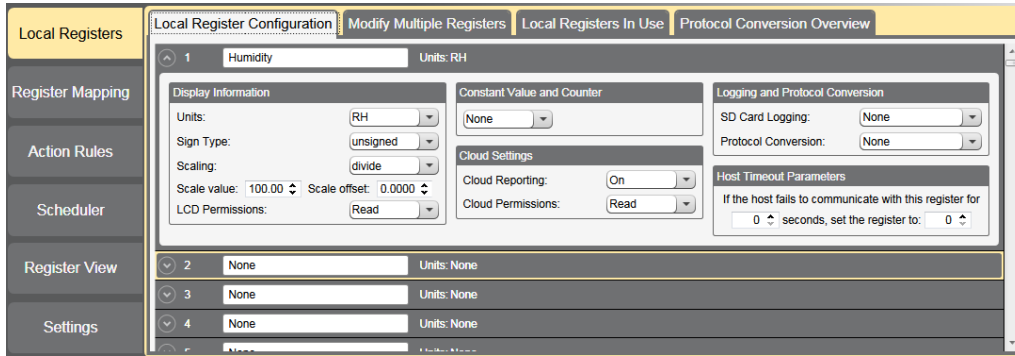
Launch the DXM Configuration Tool software. You can use one of these three screens to modify registers:

- Local Registers—Edits individual registers
- Modify **Multiple** Registers—Edits multiple registers at the same time
- Local Registers in Use—Edits individual registers

Refer to the [DXM Configuration Tool Instruction Manual](#) for more details.

Modify Local Registers Individually

This example configuration sets the device to push registers values to the web server.



1. Go to the Local Registers > Local Register **Configuration** screen.

The local registers are a pool of integer and floating point registers that can be used by the controller to save data that was created, store data from external devices, or store basic constants. The local registers are where the user defines the data sent to the web server.

This screen shows how each local register is defined.

2. Click on the down arrow next to the first line for Local Register 1. The parameters for Local Register 1 display.
3. To push the register values to the web server, set Cloud **Reporting** to ON.
4. Set the Cloud Permissions to read.

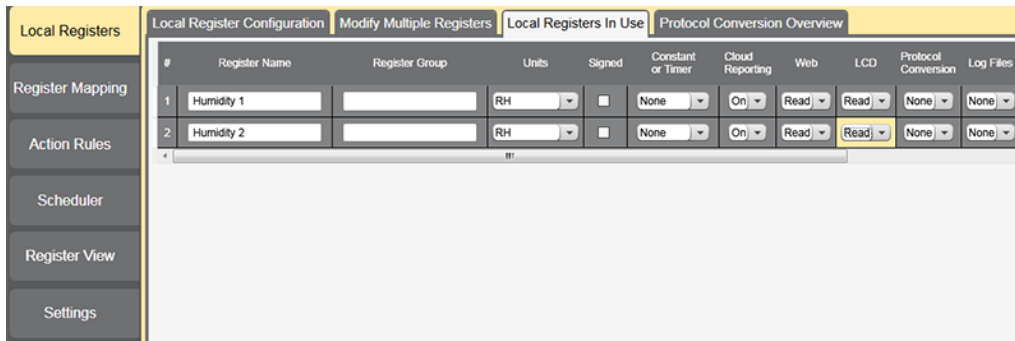
If the Cloud Permissions are set to Read, the web server only views data from the device and cannot write data to the device. If the permissions are set to Write, the web server only writes to the device and cannot read the data. If the permissions are set to Read/Write, the web server can read the data from the device and write to the device from the web.

5. Set the LCD Permissions to Read.

This allows this Local Register data to be displayed on the DXM LCD under the Registers menu.

Modify Registers Using the Local Registers in Use Screen

Use this screen to modify the parameters of any local registers being used.



1. Go to the Local Registers > Local Registers in Use screen. A list of the local registers being used displays.

2. Using the drop-down lists, change the desired parameters.
3. To push register values to the web server, set **Cloud Reporting** to on and Web to read.
 If Web is set to Read, the web server only views data from the device and cannot write data to the device. If the permissions are set to Write, the web server only writes to the device and cannot read the data. If the permissions are set to Read/Write, the web server can read the data from the device and write to the device from the web.

Modify **Multiple** Registers

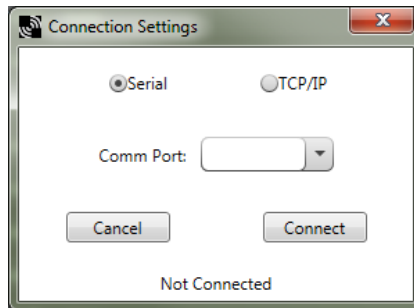
Modify a range of registers from the Local Registers > Modify **Multiple** Registers screen.

1. Enter the **Starting** register and Ending register.
2. Select the value to change using the drop-down list next to each value.
3. Enter the new value in the field provided.
4. To push register values to the web server, set **Cloud Reporting** to on and Cloud Permissions to read.
 If the Cloud Permissions are set to Read, the web server only views data from the device and cannot write data to the device. If the permissions are set to Write, the web server only writes to the device and cannot read the data. If the permissions are set to Read/Write, the web server can read the data from the device and write to the device from the web.
5. Click Change Registers.

Configure the Cloud Settings

1. To configure the connection to the web server, go to the **Settings** > Cloud Services screen.

2. Copy and paste the Site ID.
The Site ID is that long string of numbers and letters from the Sensonix Web Services site.
3. Verify the Server Name/IP is set to `push.sensonix.net` and the Page is set to `/push.aspx` for sending to the Sensonix Web Services site.
4. Set the Cloud Push Interval to a value appropriate for your application.
The Cloud Push Interval determines how often the device pushes the data to the web. The faster the push interval, the more data is sent to the site. Cellular plans can only push at an interval of 10 minutes or longer, while Ethernet connections can push at an interval of 1 minute or longer. The Sample Count specifies how many times the data is gathered within the Cloud Push Interval.
For example, if the Cloud Push Interval is 15 minutes and the Sample Count is set to 3, then during each data push (every 15 minutes), 3 samples are sent to the web. This is one sample every 5 minutes.
5. Save the configuration file by going to File > Save.
No spaces or special characters are permitted in file names.
6. With a USB cable connected to the device, go to the Device > **Connection Settings** menu.
7. Select the appropriate COMM port and click Connect.



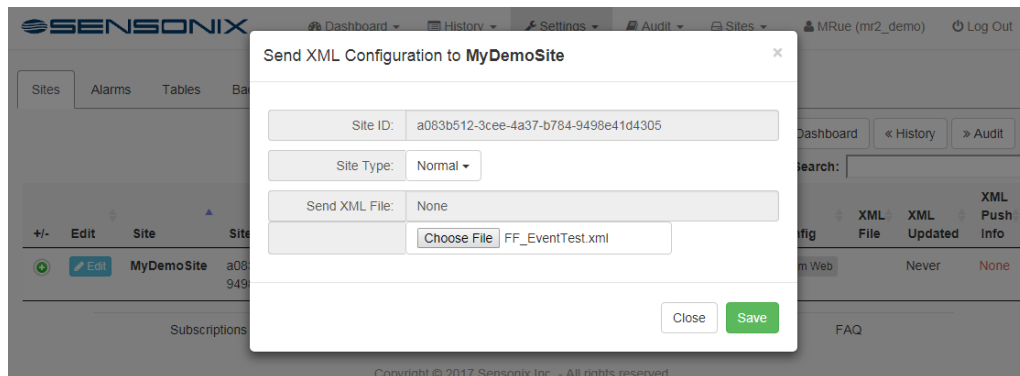
If multiple COMM ports are visible, try each one until the software is able to connect to the device.

8. Go to Device > Send **Configuration** to the Device to upload the new XML file.

Upload the XML **Configuration** File to the Website

To upload an XML configuration file to the website, follow these instructions.

1. At the webserver, select **Settings** > Sites.
2. Click Send XML to Web.



3. Click Choose File. Select the file that was just updated to the DXM and click Save.
After the XML file is loaded into the webserver, the webserver uses the register names and configurations defined in the configuration file.
4. Click on the Site Name link to go to the configured registers to see the values uploaded by the device.
The same XML configuration files is now loaded on both the DXM Controller and the Website. After some time, the data should be seen on the website.

Web Services Features

For more information on each of these features, see the [Sensonix Web Services Instruction Manual](#).

View Graph of Individual Registers—View a graph of register values over time.

Compare Graphs of **Multiple** Registers—Compare two or more register values on the same time graph.

Set Alarms—Set alarms when a register reaches or is compared to a certain numerical value. Alarms can also be used for connectivity problems, MAC alerts, geofence alerts, or register limits. If an alarm is activated, emails can be sent automatically to preset addresses.

Create Spreadsheet Tables—Create data tables to view numbers in a spreadsheet-style format.

Create FTP Backups or Download Data for Backup—Back up registers, upload logs, alarms, updates, and audits to an FTP address that can be accessed with a username and password created by the user.

Use Log Viewer for Viewing Past Data—Display graphs of data logged to the SD card, backed up previously to an FTP site, or downloaded.

Updating Script or XML via Web—Download an XML file from the DXM or upload a new XML to the DXM without having the device connected to a computer via USB.

Write to Registers via Website—Set Cloud Permissions to Write or Read/Write in the DXM Configuration to write to the DXM from the website. Instead of using the LCD on the DXM or waiting for an input value, users can write certain register values directly to the DXM from the cloud site.

Create New Companies and Users—This feature is only available with certain subscriptions. Limits may be placed on the number of companies or users a subscription can have.

Banner Engineering Corp. **Software Copyright Notice**

This software is protected by copyright, trade secret, and other intellectual property laws. You are only granted the right to use the software and only for the purposes described by Banner. Banner reserves all other rights in this software. For so long as you have obtained an authorized copy of this software directly from Banner, Banner grants you a limited, nonexclusive, nontransferable right and license to use this software.

You agree not to use, nor permit any third party to use, this software or content in a manner that violates any applicable law, regulation or terms of use under this Agreement. You agree that you will not reproduce, modify, copy, deconstruct, sell, trade or resell this software or make it available to any file-sharing or application hosting service.

Disclaimer of Warranties. Your use of this software is entirely at your own risk, except as described in this agreement. This software is provided "AS-IS." To the maximum extent permitted by applicable law, Banner, its affiliates, and its channel partners disclaim all warranties, expressed or implied, including any warranty that the software is fit for a particular purpose, title, merchantability, data loss, non-interference with or non-infringement of any intellectual property rights, or the accuracy, reliability, quality or content in or linked to the services. Banner and its affiliates and channel partners do not warrant that the services are secure, free from bugs, viruses, interruption, errors, theft or destruction. If the exclusions for implied warranties do not apply to you, any implied warranties are limited to 60 days from the date of first use of this software.

Limitation of Liability and Indemnity. Banner, its affiliates and channel partners are not liable for indirect, special, incidental, punitive or consequential damages, damages relating to corruption, security, loss or theft of data, viruses, spyware, loss of business, revenue, profits, or investment, or use of software or hardware that does not meet Banner minimum systems requirements. The above limitations apply even if Banner and its affiliates and channel partners have been advised of the possibility of such damages. This Agreement sets forth the entire liability of Banner, its affiliates and your exclusive remedy with respect to the software use. You agree to indemnify and hold Banner and its affiliates and channel partners harmless from any and all claims, liability and expenses, including reasonable attorney's fees and costs, arising out of your use of the Services or breach of this Agreement (collectively referred to as "Claims"). Banner reserves the right at its sole discretion and at its own expense, to assume the exclusive defense and control of any Claims. You agree to reasonably cooperate as requested by Banner in defense of any Claims.