



XS26-2
Expandable Safety Controller

SC26-2
Safety Controller

Safety Controller Highlights

- Intuitive icon-based drag-and-drop configuration via free PC software
- 26 inputs and two pairs of safety outputs (base controller)
- Expandable design—Add up to 8 expansion modules in any combination
- Communicates over industrial ethernet
 - 80 virtual non-safety inputs (64 on/off or mute enables and 16 resets or cancel delays)
 - 256 virtual status outputs

Industrial Ethernet



EtherNet/IP



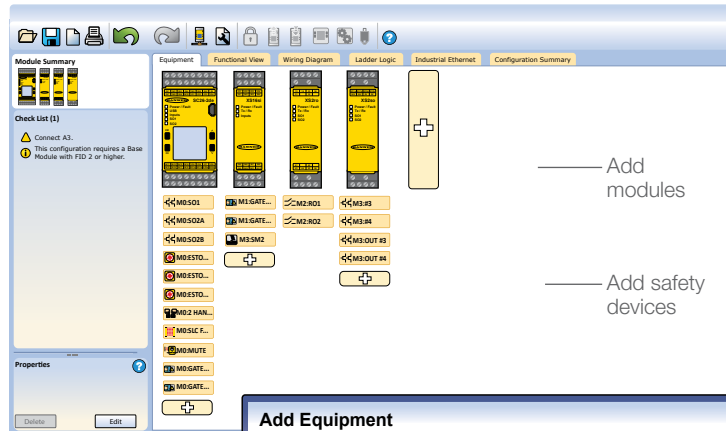
PCCC



Build System and Select Equipment

Start using the free software today. Go to bannerengineering.com/xs26-2

1. Equipment View



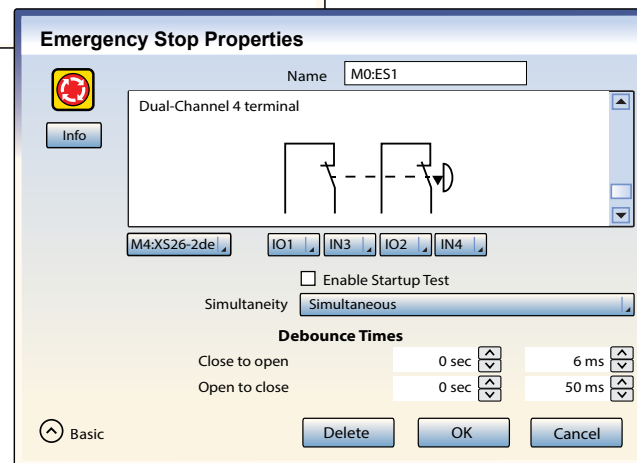
— Add modules

— Add safety devices

2. Add safety devices



3. Select safety device properties



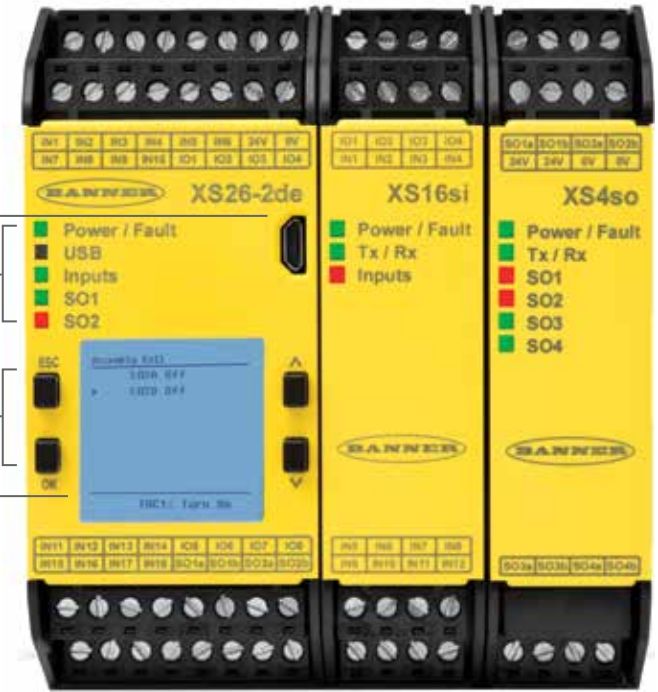
Ethernet Port

PC communication via Micro USB Port

Status LEDs

Onboard Interface Push Buttons

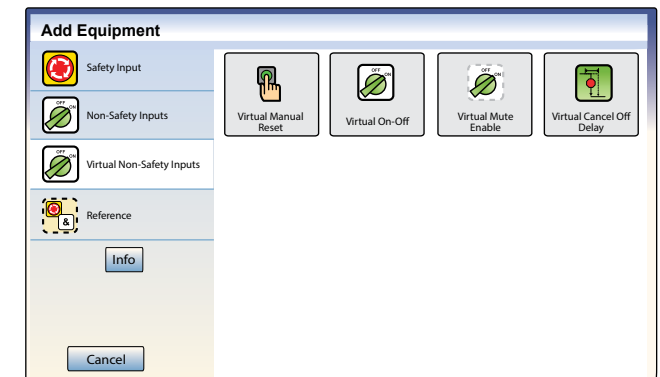
Display



Base Controller (shown with LCD and ethernet)

- Expansion Modules
- Add up to eight per system
 - Six models available

4. Add virtual non-safety inputs



5. Configure Your System in Minutes

Assorted View Menus

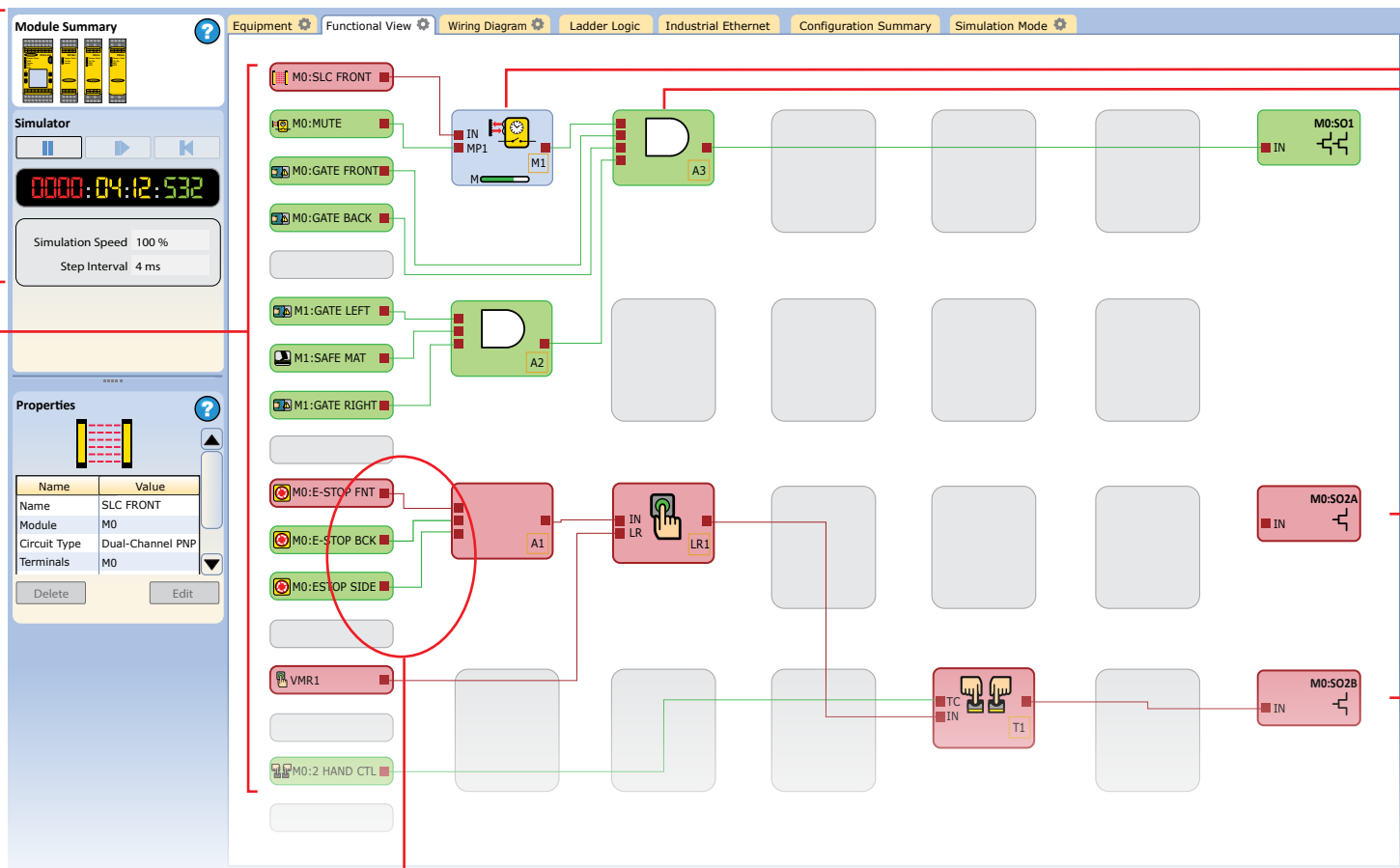
Simulation View

Module Summary and Configuration Checklist

Inputs

Function Block Logic Block

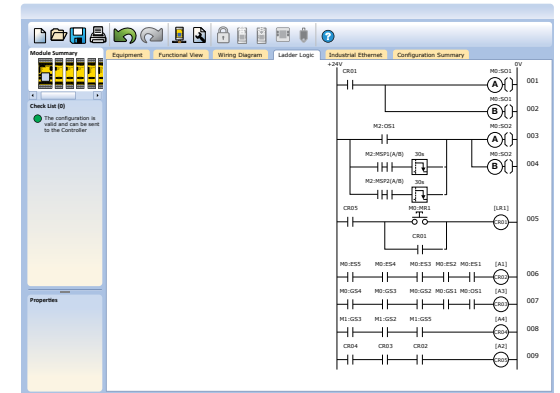
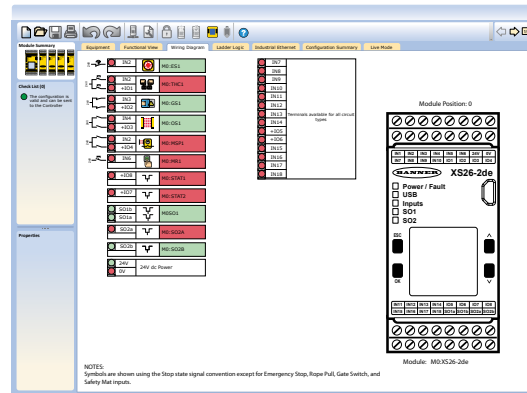
Split Output



Simple Drag-and-Drop Connections

Wiring Diagram in Live Mode

Ladder Logic



XS26-2 Expandable

SC26-2

Order
Now

Base Controllers



XS26-2d
Base Controller
with LCD

XS26-2de
Base Controller
with LCD &
Ethernet



XS26-2
Base Controller

XS26-2e
Base Controller
with Ethernet

Input Modules



XS16si
16 safety input—
4 convertible

XS8si
8 safety input—
2 convertible

Output Modules



XS2so
2 redundant safety
solid state outputs
(750 mA)

XS1ro
1 redundant
safety relay
output (6 Amps)



XS4so
4 redundant
safety solid state
outputs (500 mA)

XS2ro
2 redundant safety
relay outputs (6
Amps)

Base Controllers



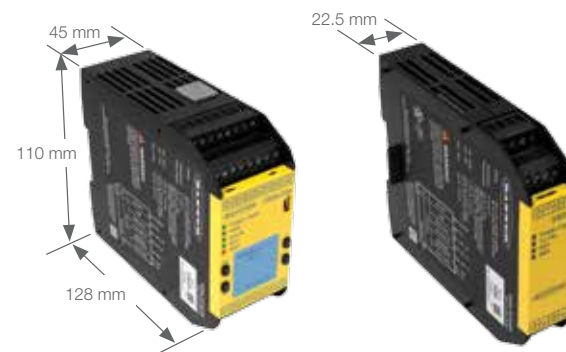
SC26-2d
Base Controller
with LCD

SC26-2de
Base Controller
with LCD &
Ethernet



SC26-2
Base Controller

SC26-2e
Base Controller
with Ethernet



Accessories



SC-USB2
USB Cable



SC-XM2
Memory Card

Additional accessories are available at bannerengineering.com

Model*	Description	Inputs/Convertible	Safety Outputs	Safety Ratings
XS26-2, e, d & de	Base Controller	26/8	2 Dual Channel PNP 0.5 A @ 24 V dc	Cat. 4, PL e (EN ISO 13849) SIL CL 3 (IEC 62061, IEC 61508)
XS8si	Safety Input Module	8/2	NA	
XS16si	Safety Input Module	16/4	NA	
XS2so	Safety Output Module	NA	2 Dual Channel PNP .75 A @ 24 V dc	
XS4so	Safety Output Module	NA	4 Dual Channel PNP .5 A @ 24 V dc	
XS1ro	Safety Relay Output Module	NA	2 NO: 6A 250 V ac/dc — 1 NC: 2.5A 150 V ac/dc	
XS2ro	Safety Relay Output Module	NA	4 NO: 6A 250 V ac/dc — 2 NC: 2.5A 150 V ac/dc	
SC26-2, e, d & de	Base Controller	26/8	2 Dual Channel PNP .5 A @ 24 V dc	

* Models operate at 24 V dc +/- 20%

Start using the free software today.
Go to bannerengineering.com/xs26-2



PN 174393 Rev. C

© 2017 Banner Engineering Corp. Minneapolis, MN USA

1-888-373-6767

www.bannerengineering.com

