

VE Series



Smart Camera

- Robust metal housing
- Intuitive programming software
- Powerful inspection capabilities





VE Series

Compact, Durable, Versatile

The VE Smart Camera is built to stand up to industrial environments and can solve many vision applications.

Durable Design



Robust, aluminum housing for harsh environments

C-mount lens for a variety of applications

Status and Troubleshooting



Bright LED indicators to easily view camera status

Two-line, eight-character display and push buttons for troubleshooting and viewing camera status

- Perform product change or trigger
- Troubleshoot and clear errors
- Change or view IP address, MAC address, or Ethernet speed
- View firmware, focus number or status

Connections



Ethernet connector with Gigabit Ethernet communication speed

Discrete communication to external devices using five user-configurable optically isolated I/O

Power Banner Vision lights directly from the camera

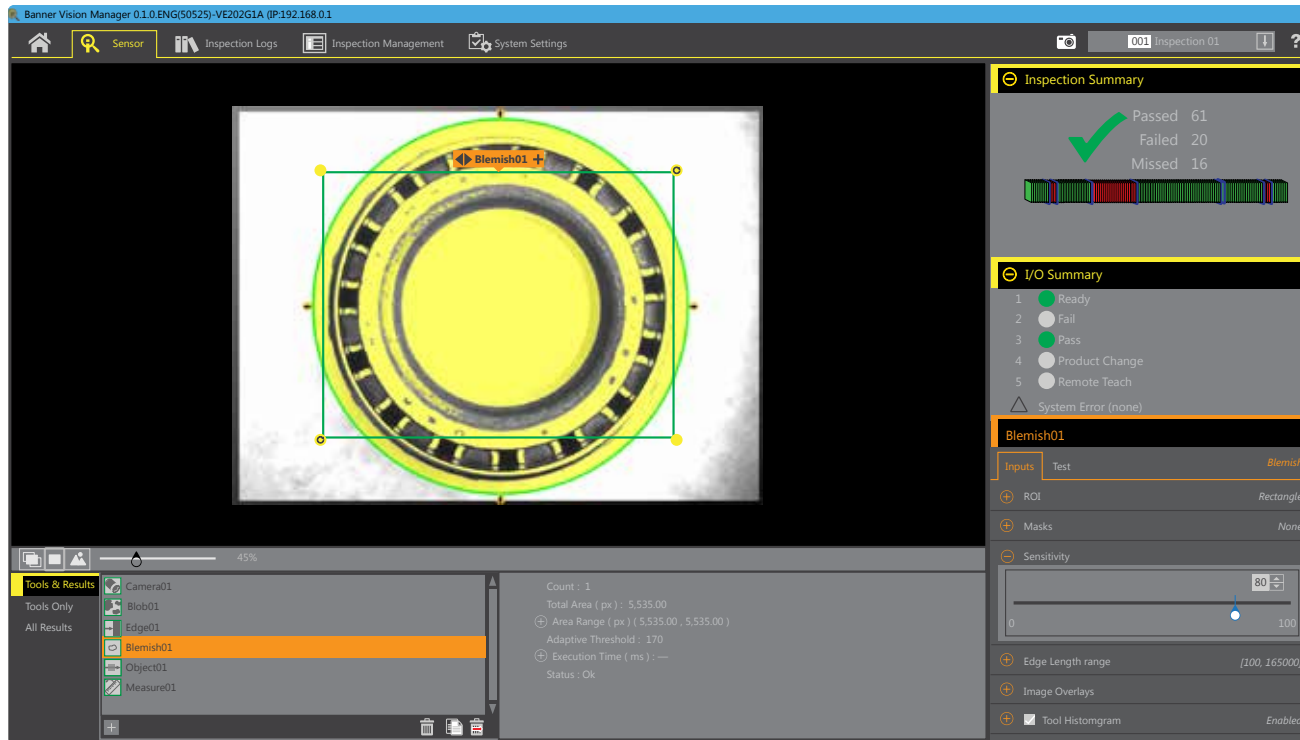
Compact size



Optional IP67 lens cover for washdown environments

Intuitive Software

VE Vision Manager software: Easy configuration, powerful functions.

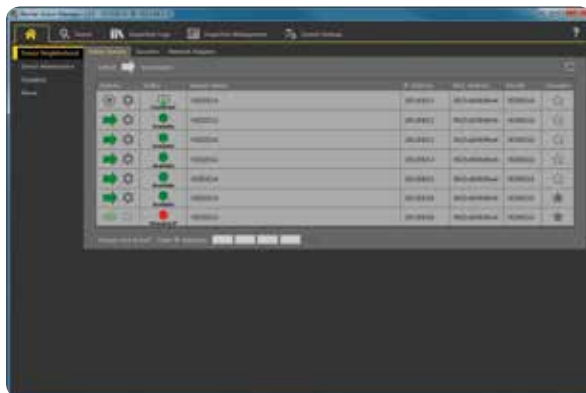


Runtime Editing

Easy-to-use configuration software with full runtime editing allows for changes to be made quickly with no costly downtime from stopping and starting inspections. Start using today by downloading at www.bannerengineering.com/vision-manager.

Full Software Emulator

Connect to multiple cameras or full software emulator for building inspections offline



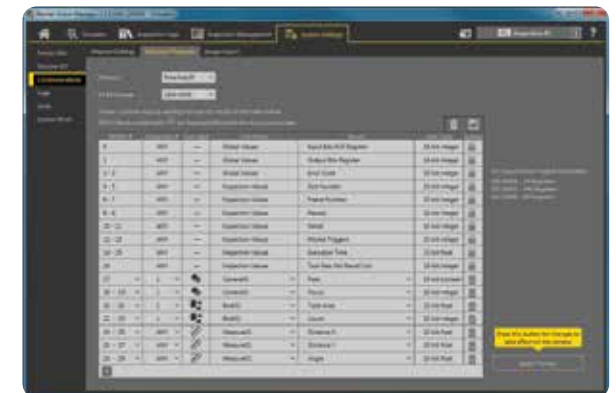
Inspection Analysis

Review past inspection results, view system logs, and quickly configure inputs and outputs



Factory Communications

Seamlessly interface with the factory floor using **EtherNet/IP, Modbus/TCP, PROFINET, and Serial** communications





VE Series

Solutions for:

Presence/Absence

- Count vials in a tray
- Verify correct labeling

Orientation/Position

- Verify the orientation of an IC chip
- Send part location to a pick-and-place robot

Flaw Detection

- Calculate the eccentricity of pizza crust
- Identify burn marks on a nonwoven web

Measuring

- Measure critical dimensions of a stamped part
- Measure bottle cap height

Door Panel Adhesive Inspection

Challenge

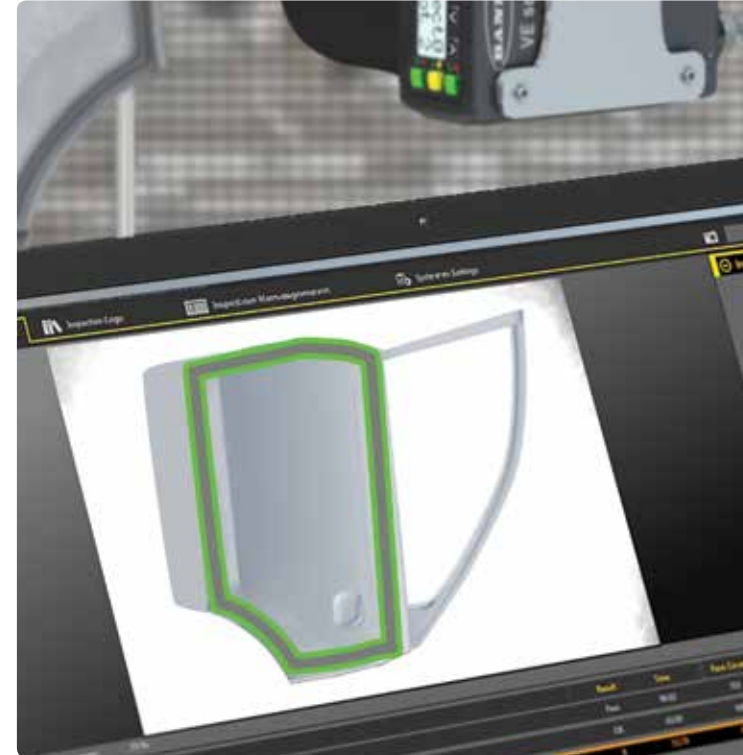
During vehicle assembly, a track of adhesive is applied along the perimeter of a door. Excessive adhesive can burst through the seams requiring cleanup, while an insufficient amount of adhesive will not seal the panel correctly.

Solution

The Bead Tool can inspect each door panel for the presence and amount of adhesive, and provide real time feedback of improper bead application.



Bead Tool



Cell Phone Inspection

Challenge

Cell phones are comprised of many small electric parts and connectors. Manually inspecting to ensure the components are present and correctly installed is difficult and impractical.

Solution

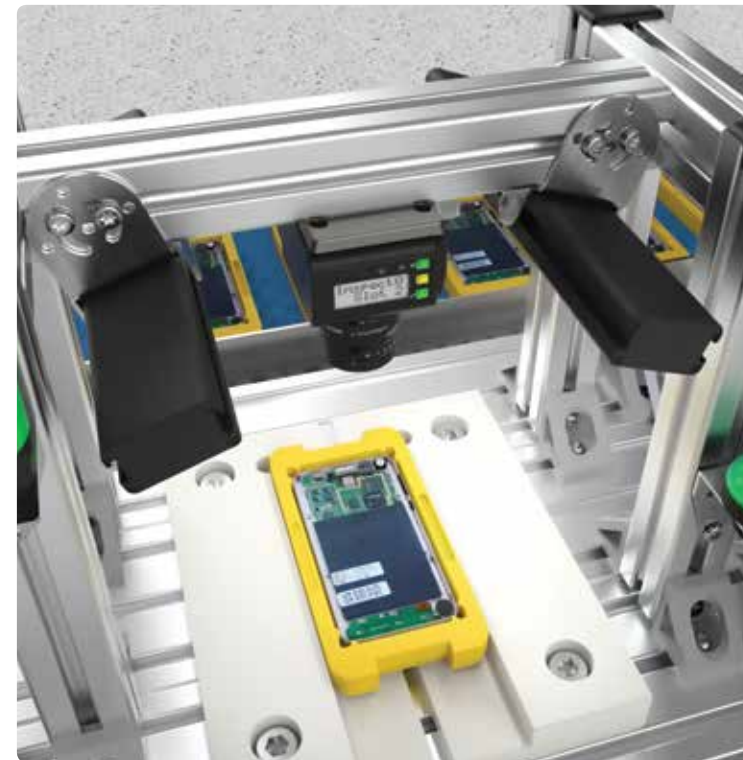
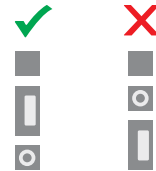
The VE Series Smart Camera has 5 mega pixels which allows for a higher resolution inspection. Using match tools, a single camera has enough resolution to detect very small electronic parts and confirm they are properly mounted on each cell phone.



Measure Tool



Match Tool



Packaging Inspection

Challenge

During packaging, tubes of toothpaste need to be placed into cartons. A logo on the tube indicates the specific type of toothpaste inside the box. Frequent product changeover, printing mistakes, human error and other factors can result in packaging errors.

Solution

A VE Series Smart Camera uses a Match Tool to inspect the product logo on each box before the corresponding tube of toothpaste is inserted.



Match
Tool



Blister Pack Inspection

Challenge

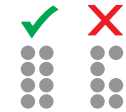
Pharmaceutical companies package medications into blister packs. Before being sealed, each cell must be inspected to verify that the tablet has been correctly placed and that the tablet is whole.

Solution

Using the Blob Tool the VE counts and measures multiple rows of tablets in a single inspection.



Blob
Tool



Sortation Conveyor Inspection

Challenge

Each tray is inspected to verify it is empty before a package is placed on the tray. The package can be any color, shape, and size and can be located anywhere on the tray.

Solution

The VE Series Smart Camera with the 5mp imager uses the Blemish Tool to inspect the entire tray to detect if the smallest package was still on the tray before loading.



Blemish
Tool





VE Series

Family

VE

Resolution

202

Imager

G

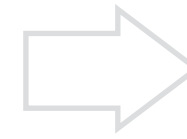
Ethernet Connection

1A

200 = WVGA, 752 x 480 pixels
 201 = 1.3 MP, 1280 x 1024 pixels
 202 = 2 MP, 1600 x 1200 pixels
 205 = 5 MP, 2592 x 2048 pixels

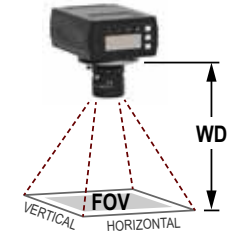
G = Grayscale

1A = M12, 8-pin
 Euro-style female



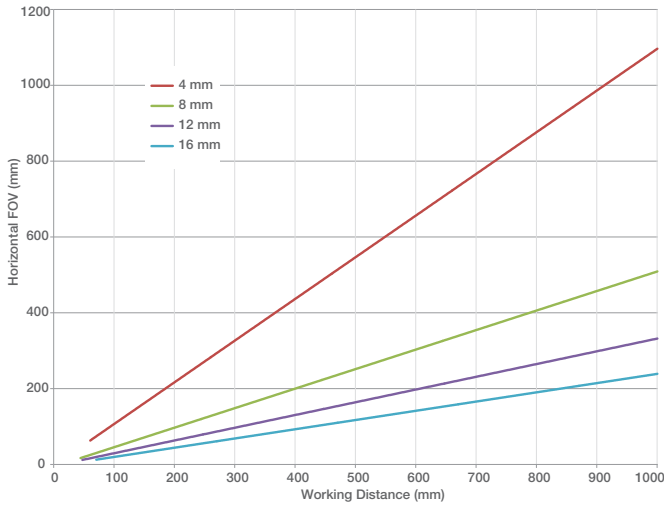
Choose lens based on Field of View (FOV) and Working Distance (WD)

Select a camera resolution

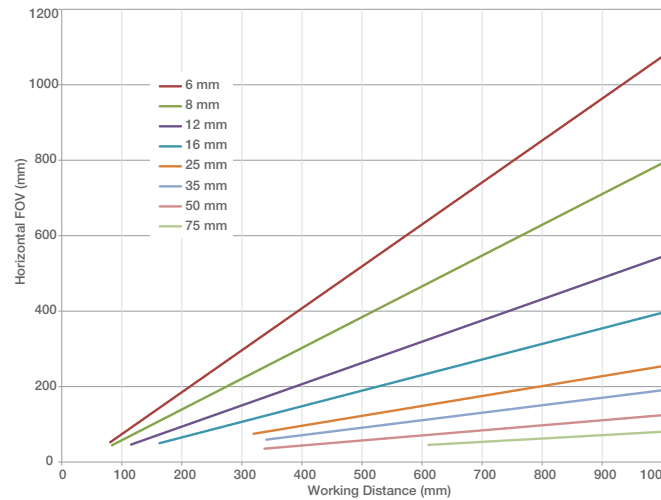


Lens Charts

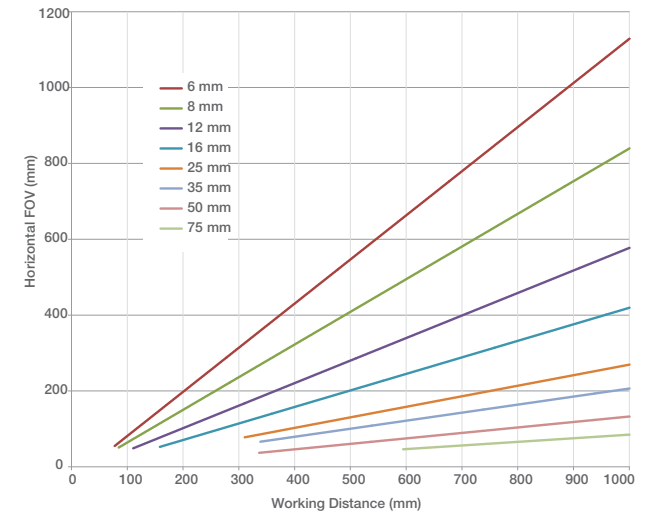
WVGA, 752 x 480 pixels



1.3 MP, 1280 x 1024 pixels



2 MP, 1600 x 1200 Pixels



C-Mount Lenses for use with WVGA cameras only

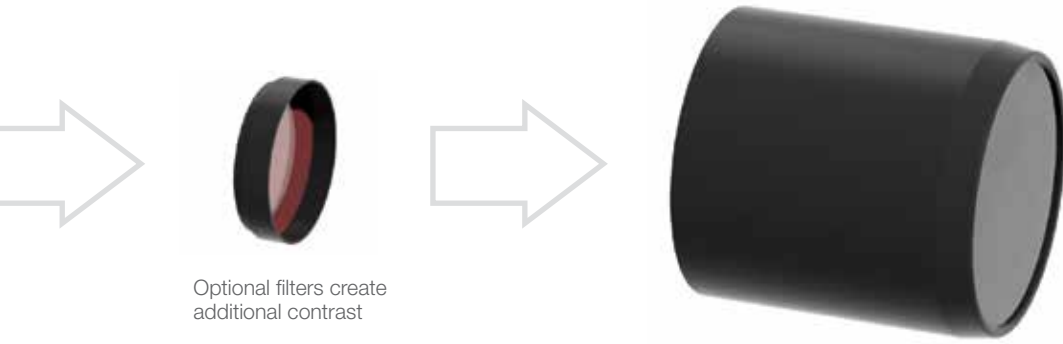
Focal Length	Model
4 mm	LCF04
8 mm	LCF08
12 mm	LCF12
16 mm	LCF16

WVGA models can also use Megapixel C-mount Lenses

Megapixel C-mount Lenses for use with WVGA, 1.3 MP, or 2 MP cameras

Focal Length	Model	Focal Length	Model	Focal Length	Model
6 mm	LCF06LEVMP	16 mm	LCF16LEVMP	50 mm	LCF50LEVMP
8 mm	LCF08LEVMP	25 mm	LCF25LEVMP	75 mm	LCF75LEVMP
12 mm	LCF12LEVMP	35 mm	LCF35LEVMP		

Contact factory or visit www.bannerengineering.com for additional lens information and a comprehensive product offering.



Optional filters create additional contrast

IP67 lens covers available for additional protection

Bandpass Filters

for use with Megapixel C-mount Lenses*

Type	Model
Blue	FLTB470-27
Green	FLTG525-27
Infrared	FLTI850-27
Red	FLTR635-27
Dark Red	FLTR660-27
Linear Polarizer	FLTPR032-27

* For use with 8 to 35 mm focal lengths. Contact the factory for additional options.

Brackets



SMBVERA
Right-angle bracket



SMBVEMP
Mounting plate with M8x1.25, 10-32, and 1/2-20 adapter holes



Power Cordsets

Type	Length	Model
12-Pin M12/Euro-Style with Open Shield	1.83 m (6 ft)	MQDC2S-1206
	4.57 m (15 ft)	MQDC2S-1215
	9.14 m (30 ft)	MQDC2S-1230
	15.2 m (50 ft)	MQDC2S-1250
	22.9 m (75 ft)	MQDC2S-1275

For right-angle models add **RA** to the model number (example, **MQDC2S-1250RA**)



Communication Cordsets

Type	Length	Model
RJ45 Ethernet to 8-Pin Threaded M12/Euro-Style (Cat5e Shielded)	1.83 m (6 ft)	STP-M12-806
	4.57 m (15 ft)	STP-M12-815
	9.14 m (30 ft)	STP-M12-830

Sealed Lens Covers

Painted aluminum covers (work with most format lenses)

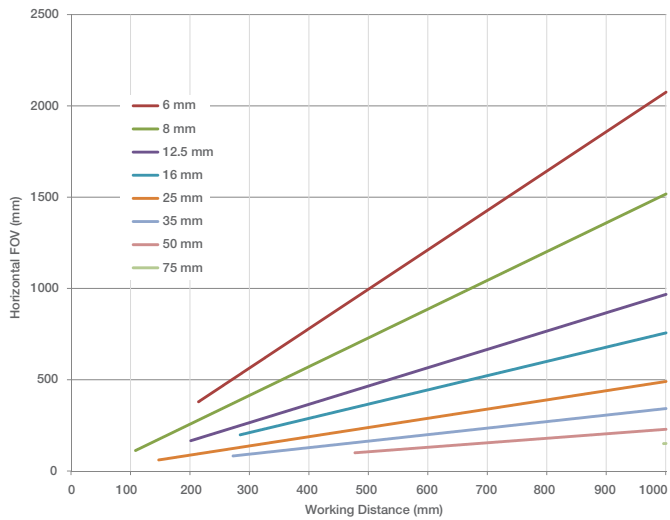
Type	Model
60 mm cover with polycarbonate window	VELC60-PC
60 mm cover with borosilicate glass window	VELC60-BG
85 mm cover with polycarbonate window	VELC85-PC
85 mm cover with borosilicate glass window	VELC85-BG



Display Cover

Type	Model
Protective display cover with borosilicate glass window	VEDC-BG

5 MP, 2592 x 2048 Pixels



1" Format C-Mount Lenses for use with 5 MP cameras

Focal Length	Model	Focal Length	Model
6 mm	LCF06LK1F	25 mm	LCF25LK1F
8 mm	LCF08LK1F	35 mm	LCF35LK1F
12 mm	LCF12LK1F	50 mm	LCF50LK1F
16 mm	LCF16LK1F	75 mm	LCF75LK1F



VE Series



Power	12 to 30 V dc
Discrete I/O	1 Trigger IN 5 programmable I/O
Output Configuration	Optically isolated
Lens	C-mount
Communication	10/100/1000 Mbps Ethernet
Communication Protocols	Ethernet/IP, Modbus/TCP, PCCC, PROFINET, TCP/IP, FTP, and RS-232
Acquisition	256 grayscale levels Frames per Second: 50 fps, max. depending on inspection settings Image Size: 752 x 480 pixels 1280 x 1024 pixels 1600 x 1200 pixels 2592 x 2048 pixels

Construction	Housing: Aluminum Display Label: Polyester
Connections	Communications: M12, 8-pin Euro-style male Light Connector: M8, 3-pin Pico-style female Power, Discrete I/O: M12, 12-pin Euro-style female
Environmental Rating	IEC IP67 with optional lens cover
Software Tools	Average Gray, Bead, Blemish, Blob, Line Detect, Circle Detect, Edge, Locate, Logic, Match, Math, Measure, Object
Certifications	

Vision Lighting

Lighting is the key to creating all-important contrast between the feature of interest and its background. Contact Banner for more information about our wide Vision Lighting product offering.



Status Indicators

Monitor system status by integrating a wide selection of indicator lights into camera outputs.



Trigger Sensors

Large selection of sensors are available to use as trigger inputs to the camera.



194166 rev. B

© 2017 Banner Engineering Corp. Minneapolis, MN USA

This product includes software developed by the University of California, Berkeley and its contributors

1-888-373-6767

www.bannerengineering.com

BANNER
more sensors, more solutions