



**USG**  
U.S. Gauge

**USG**<sup>®</sup>  
U.S. Gauge

**USG**<sup>®</sup>  
U.S. Gauge

**USG**<sup>®</sup>  
U.S. Gauge

**USG**<sup>®</sup>  
U.S. Gauge

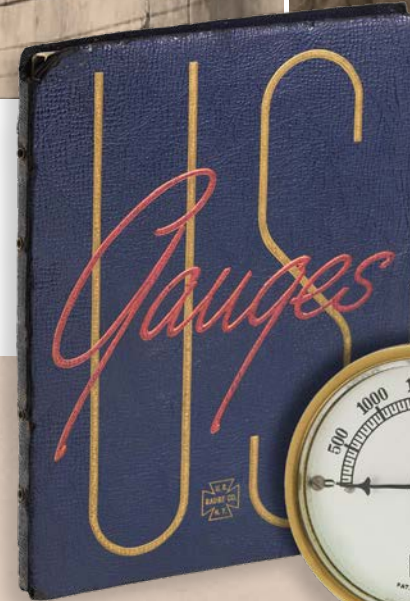
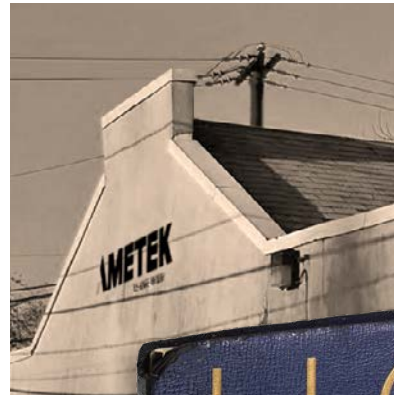
**USG**<sup>®</sup>  
U.S. Gauge

# Product Selection Guide

**USG**<sup>®</sup>  
U.S. Gauge

# A Long History of Quality

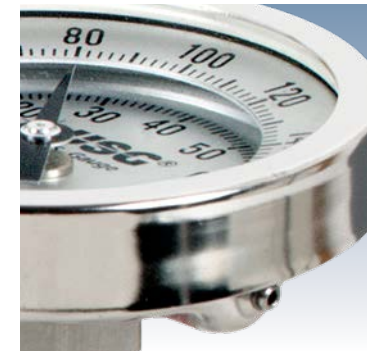
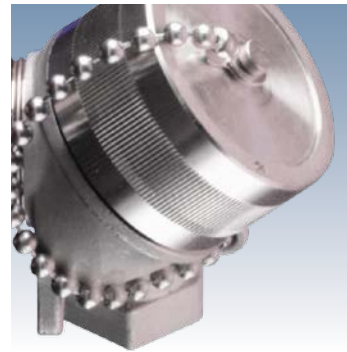
**U.S.** Gauge was founded in 1904 with 14 employees in Sellersville, Pennsylvania, outside of Philadelphia. During the 1940s, U.S. Gauge became part of AMETEK. Today, AMETEK U.S. Gauge has primary manufacturing located in Largo, Florida and Peck, Michigan for process gauges and diaphragm seals. Clawson, Michigan is home to our Distribution Center. Customer service, sales, applications, and marketing are based out of our facility in Horsham, Pennsylvania.





## Measurement Devices to Meet Any Need

**A** METEK U.S. Gauge is one of the world's largest suppliers of pressure gauges, diaphragm seals, bimetallic thermometers, thermowells, pressure transducers and transmitters, pneumatic controllers, ultra-high-purity gauges and switches, and submersible level instrumentation. All gauges are manufactured to ASME B40.100 specifications.



## Pressure Measurement Technology

**PMT** Products was founded in the 1960's, and has been developing a variety of pressure transducers and pressure transmitters over the years, ranging from low cost general industrial units to Intrinsically Safe, or Explosion Proof, units for hazardous locations. Transducers and transmitters are available in vacuum pressure, gauge pressure, absolute pressure, and compound gauge pressure. The pressure transmitter line includes specialized Military QPL MIL-P-24212C (SH) and MIL-T-24742 (SH) approved units for the U.S. Navy. PMT also offers pneumatic pressure controllers and submersible level transducers. Products are manufactured at both the Horsham, Pennsylvania and San Luis Obispo, California plants, and shipped worldwide.

# Pressure Gauges

Clockwise from left: Models 1929, 1986, 1931, XR, 1933, and 1901.

PROCESS

Accuracy	Size	Case Material	Wetted Parts	Connection	Model
Vacuum to 1000 psi	± (0.5% of FS)	4.5" (114 mm)	PET	Phosphor Bronze and Brass	1980 ●
Vacuum to 11 600 psi	± (0.5% of FS)	4.5" (114 mm)	PET	316L Stainless Steel	1981 ●
Vacuum to 10 000 psi	± (0.5% of FS)	4.5" (114 mm)	Thermoplastic	Monel	1986 ●
Vacuum to 1000 psi	± (0.5% of FS)	4.5" (114 mm) or 6" (152 mm)	Aluminum	Phosphor Bronze and Brass	1901 ●
Vacuum to 1000 psi	± (0.5% of FS)	4.5" (114 mm) or 6" (152 mm)	Aluminum	Phosphor Bronze and Brass	1903 ●
Vacuum to 10 psi / 15 "H <sub>2</sub> O to 200 "H <sub>2</sub> O	± (1.0% of FS)	4.5" (114 mm)	PET	316L Stainless Steel	1929 ●
Vacuum to 6000 psi	± (0.5% of FS)	4.5" (114 mm) or 6" (152 mm)	Aluminum	316L Stainless Steel	1931 ●
Vacuum to 11 600 psi	± (0.5% of FS)	4.5" (114 mm)	Aluminum	316L Stainless Steel	1933 ●
Vacuum to 3000 psi	± (0.5% of FS)	4.5" (114 mm) or 4" (102 mm)	PET	316L Stainless Steel	XR* ●
Pressure Range	Specifications				Model

\*1981 with all-welded diaphragm seal

LIQUID FILLABLE

Accuracy	Size	Case Material	Wetted Parts	Connection	Model
Vacuum to 23 000 psi	± (1.6 or 1.0% of FS)	2.5" (63 mm) or 4" (100 mm) or 6" (152 mm)	Stainless Steel	316L Stainless Steel	656 ○
Vacuum to 23 000 psi	± (1.6 or 1.0% of FS)	2.5" (63 mm) or 4" (100 mm)	Stainless Steel	316L Stainless Steel	659 ●
Vacuum to 15 000 psi	± (3-2-3% of FS) or ± (1.0% of FS)	2.5" (63 mm) or 4" (100 mm)	Stainless Steel	316L Stainless Steel	1550/1553 ○
Vacuum to 10 000 psi	± (3-2-3% of FS) or ± (1.0% of FS)	1.5" (38 mm) or 2" (51 mm) or 2.5" (63 mm) or 4" (100 mm)	Stainless Steel	Phosphor Bronze and Brass	1555/1558/ 1559 ○
Pressure Range	Specifications				Model

From left to right: Models 659, 1558, and 1550.

- LM: low or stem mount
- CBM-FF: center back mount with front flange
- LBM-U-Clamp: low back mount with U-Clamp
- Solid Front
- CBM: center back mount
- CBM-U-Clamp: center back mount with U-Clamp
- LBM-FF: low back mount with front flange
- Open Front



# Pressure Gauges

Clockwise from left: Models 562, P-500, 1409, 834, P-915 LM, 570, 1403, and P-915 CBM.



TEST

	Accuracy	Size	Case Material	Wetted Parts	Connection	Model
Vacuum to 5000 psi	± (0.25% of FS)	4.5" (114 mm) or 6" (152 mm)	Aluminum	Phosphor Bronze or Be Copper and Brass	■	1403 ●
Vacuum to 5000 psi	± (0.25% of FS)	4.5" (114 mm) or 6" (152 mm)	Aluminum	Phosphor Bronze or Be Copper and Brass	■	1404 ●
0 to 5000 psi	± (0.5% of FS)	3" (76 mm)	ABS	Phosphor Bronze or Be Copper and Brass	■	1409 ○
<b>Pressure Range</b>	<b>Specifications</b>					<b>Model</b>

GENERAL EQUIPMENT

	Accuracy	Size	Case Material	Wetted Parts	Connection	Model
Vacuum to 5000 psi	± (3-2-3% of FS)	1.5" (38 mm) or 2" (51 mm) or 2.5" (63 mm) or 3.5" (89 mm) or 4.5" (114 mm)	Painted Steel	Phosphor Bronze or Be Copper and Brass	■ ■	P500 ○
0 to 400 psi	± (3-2-3% of FS)	1.5" (38 mm) or 2" (51 mm)	Painted Steel	Phosphor Bronze and Brass	■ ■	P500 ○ Low Lead
Vacuum to 2000 psi	± (3-2-3% of FS)	1.5" (38 mm)	Painted Steel	Phosphor Bronze or Be Copper and Brass	■	562 ○
0 to 300 psi	± (3-2-3% of span)	2" (51 mm)	Polypropylene	Phosphor Bronze and Brass	■ ■	570 ○
0 to 300 psi	± (3-2-3% of FS)	1.5" (38 mm) or 2" (51 mm)	ABS	Phosphor Bronze or Be Copper and Brass	■ ■	590 ○
Vacuum to 5000 psi	± (3-2-3% of span)	2" (51 mm) or 2.5" (63 mm) or 3.5" (89 mm)	Painted Steel	Phosphor Bronze or Be Copper and Brass	■ ■	844 ○ 845
Vacuum to 4000 psi	± (3-2-3% of FS) or ± (1.6% of span)	40 mm or 50 mm or 63 mm or	ABS	Phosphor Bronze and Brass	■ ■	915 ○
<b>Pressure Range</b>	<b>Specifications</b>					<b>Model</b>

## Pressure Accessories

We have a wide range of accessories to support and protect your pressure gauges, including protective rubber boots, snubbers, and overpressure protectors.



From left to right: Siphon, Stainless Steel and Brass Porous Pressure Snubbers, Overpressure Protector, and Gauge Boot.

- LM: low or stem mount
- CBM-FF: center back mount with front flange
- LBM-U-Clamp: low back mount with U-Clamp
- Solid Front
- CBM: center back mount
- CBM-U-Clamp: center back mount with U-Clamp
- LBM-FF: low back mount with front flange
- Open Front



# Pressure Gauges

From top to bottom: Models 1590, 1535, 1785, 534, 1088, 600, and 1370.

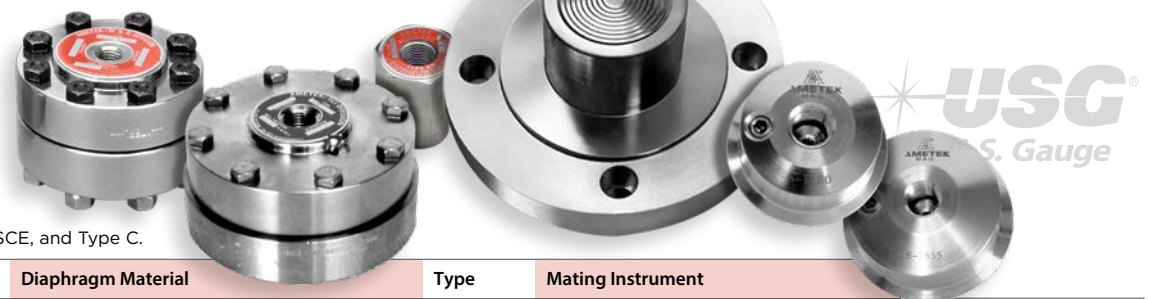
SPECIAL APPLICATIONS

Pressure Range	Accuracy	Size	Case Material	Wetted Parts	Connection	Application	Model
Vacuum to 300 psi	± (3-2-3% of span)	2.5" (63 mm) or 3.5" (89 mm)	Painted Steel	316L Stainless Steel and Nickel Plated Steel	■	Ammonia Refrigerant	1706 ○
0 to 75 psi / 0 to 320° F	± (3-2-3% of span)	2.5" (63 mm)	Painted Steel	Brass	■	Boiler Pressure	1088 ○
Vacuum, 0-30" Hg	± (3-2-3% of span)	2" (51 mm)	Chrome Plated Brass	Be Copper and Stainless Steel	■	Canned Food	534 ○
0 to 4000 psi	± (3-2-3% of span)	1.5" (38 mm) or 2" (51 mm) or 2.5" (63 mm) or 50 mm	Brass/Painted Steel	Phosphor Bronze or Be Copper and Brass	■ ■ (for OEMs)	Compressed Gas Medical Equipment	P-600 Series ○
Vacuum to 6000 psi	± (3-2-3% of span)	1.5" (38 mm)	304 Stainless Steel	316L Stainless Steel	■ ■	Specialty Gas/Corrosion Weather Resistance	1521 ○
Vacuum to 6000 psi	± (3-2-3% of span)	2" (51 mm)	304 Stainless Steel	316L Stainless Steel	■ ■	Specialty Gas/Corrosion Weather Resistance	1522 ○
Vacuum to 3000 psi	± (1% of span) or ± (2% of span)	2" (51 mm) or 2.5" (63 mm)	Drawn Stainless Steel	316L Stainless Steel	■ ■	Specialty Gas/Corrosion Weather Resistance	1535 ○
Vacuum to 800 psi	± (3-2-3% of span)	2.5" (63 mm)	ABS	Phosphor Bronze and Brass	■	HVAC Refrigerant	1785 ○
0 to 15 "H <sub>2</sub> O / 0 to 200 "H <sub>2</sub> O	± (3-2-3% of span)	2.5" (63 mm)	Painted Steel	Be Copper Alloy and Brass	■ ■	Low Pressure	733 & 734 ○
Vacuum to 1000 psi	± (1.5-1-1.5% of span)	4.5" (114 mm)	304 Stainless Steel	Phosphor Bronze or Be Copper and Brass	■	Mechanical Contractors	5105 ○
Vacuum to 20 psi / 0 to 300 "H <sub>2</sub> O	± (3-2-3% of span)	1.5" (38 mm)	304 Stainless Steel	316L Stainless Steel	■ ■	Medical Equipment	P-500 ○
3 to 15 psi (inner scale 0-10 or 0-100)	± (2-1-2% of span)	2" (51 mm) or 2.5" (63 mm) or 3.5" (89 mm)	Painted Steel	Copper and Brass	■ ■	Receiver Gauge	1370 ○
Vacuum to 300 psi	± (3-2-3% of span)	3.5" (89 mm)	Black Thermoplastic	Phosphor Bronze and Brass	■	Sprinkler Systems	1590 ○
0 to 60 psi	± (3-2-3% of span) or ± (1.6% of span)	2" (51 mm)	Brass-plated Steel	Phosphor Bronze and Brass	■	Tire Pressure	168866 ○
0 to 60 psi	± (3-2-3% of span) or ± (1.6% of span)	2" (51 mm)	Chrome-plated Steel	Phosphor Bronze and Chrome Aluminum	■	Tire Pressure	169113 ○



- LM: low or stem mount    ■ CBM-FF: center back mount with front flange    ■ LBM-U-Clamp: low back mount with U-Clamp    ● Solid Front
- CBM: center back mount    ■ CBM-U-Clamp: center back mount with U-Clamp    ■ LBM-FF: low back mount with front flange    ○ Open Front

# Diaphragm Seals



From left to right: Type T, Type ST, Type E, Type SCE, and Type C.

VARIOUS APPLICATIONS

Pressure Range	Process Connection	Lower Housing	Diaphragm Material	Type	Mating Instrument	Model
29 "Hg to 600 psi	3-A Tri-clamp (Sanitary)	316L SST	316L SST	Welded	2.5" (63 mm) & 4" (100 mm) Gauges, Switches or Transducers/Transmitters	<b>Type C</b> Sanitary Series
0 to 5000 psi	Threaded	316L SST, 304L SST, HASTELLOY® C276	316L SST, 304L SST, HASTELLOY® C276, Tantalum	Welded	2.5" (63 mm) to 4" (100 mm) Gauges, Switches, Recorders, Transducers/Transmitters	<b>Type E</b> Economy Series
29 "Hg to 1250 psi or Flange Dependent	Threaded, Flange, or Flow Through	Metals incl: 316L SST, 304L SST, HASTELLOY® C276, Inconel 600, Monel 400, Titanium, & other*. Polymers incl: Teflon™, Kynar®, PVC, & others**	Buna N, EPT, Kalrez 1050®, Neoprene, Viton	Removable	2.5" (63 mm) to 6" (160 mm) Gauges, Switches, Recorders, Transducers/Transmitters	<b>Type L</b> Low Pressure Series
60 psi to 2500 psi or Flange Dependent	Threaded, Flange, or Flow Through	Metals incl: 316L SST, 304L SST, HASTELLOY® (C276, C22, or B), Inconel 600 or 625, Monel 400, Tantalum, & Titanium. Polymers incl: Teflon™, Kynar®, PVC, & others**	316L SST, 304L SST, HASTELLOY® (C276, C22, or B), Inconel 600 or 625, Monel 400, Tantalum, and Titanium	Removable	2.5" (63 mm) to 6" (160 mm) Gauges, Switches, Recorders, Transducers/Transmitters	<b>Type R</b> Removable Diaphragm Series
60 psi to 2500 psi or Flange Dependent	Threaded, Flange, or Flow Through	Metals incl: 316L SST, 304L SST, HASTELLOY® (C276, C22, or B), Inconel 600 or 625, Monel 400, & Titanium. Polymers incl: Teflon™, Kynar®, PVC, & others**	316L SST, 304L SST, Alloy 20, HASTELLOY® (C276, C22, or B), Inconel 600, Monel 400, Nickel, Tantalum, and Titanium	Welded	2.5" (63 mm) to 6" (160 mm) Gauges, Switches, Recorders, Transducers/Transmitters	<b>Type S</b> Welded Metal Diaphragm Series
60 psi to Flange Dependent	Flange	Alloy 20, 304L SST, 316L SST, HASTELLOY® C276 or B, Inconel 600 or 625, Monel 400, Nickel, & Titanium	316L SST, 304L SST, Alloy 20, HASTELLOY® C276 or B, Inconel 600, Monel 400 (only with Monel housing), Nickel, Tantalum, and Titanium	Welded	2.5" (63 mm) to 6" (160 mm) Gauges, Switches, Recorders, Transducers/Transmitters	<b>Type SCE</b> Extended Length Tank Application Welded Metal Diaphragm Series
60 psi to Flange Dependent	Flange	316L SST, HASTELLOY® C276	316L SST, HASTELLOY® C276, Tantalum	Welded	2.5" (63 mm) to 6" (160 mm) Gauges, Switches, Recorders, Transducers/Transmitters	<b>Type SCW</b> Slip-Flanged Welded Metal Diaphragm Series
60 psi to Flange Dependent	Flange	Alloy 20, 304L SST, 316L SST, HASTELLOY® (C276, C22, or B), Inconel 600 or 625, Monel 400, Nickel, Steel & Titanium	316L SST, 304L SST, Alloy 20, HASTELLOY® (C276, C22, or B), Inconel 600 or 625, Monel 400 (only with Monel housing), Nickel, Tantalum, and Titanium	Welded	2.5" (63 mm) to 6" (160 mm) Gauges, Switches, Recorders, Transducers/Transmitters	<b>Type SFX</b> Limited Space (Low Profile) Welded Metal Diaphragm Series
60 psi to 1500 psi or Flange Dependent	Inline	304L SST, 316L SST, Steel	316L SST, 304L SST, Alloy 20, HASTELLOY® C276 or B, Inconel 600, Monel 400 (only with Monel housing), Nickel, Tantalum, and Titanium	Welded	2.5" (63 mm) to 6" (160 mm) Gauges, Switches, Recorders, Transducers/Transmitters	<b>Type SMJ/SNJ</b> Jacketed Pipe Inline Series
29 "Hg to 0 to 15 psi up to 1500 psi, or Flange Dependent	Threaded, Flange, or Inline	Alloy 20, 304L SST, 316L SST, HASTELLOY® (C276, C22, or B), Inconel 600 or 625, Monel 400, Nickel, Steel, Titanium, & Zirconium	316L SST, 304L SST, Alloy 20, HASTELLOY® (C276, C22, or B), Inconel 600 or 625, Monel 400 (only with Monel housing), Nickel, and Tantalum	Welded	2.5" (63 mm) to 6" (160 mm) Gauges, Switches, Recorders, Transducers/Transmitters	<b>Type ST</b> Low Pressure Metal Diaphragm Series
29 "Hg up to 1500 psi or Flange Dependent	Threaded, Flange, or Inline	Metals incl: 316L SST, 304L SST, HASTELLOY® (C276, C22, or B), Inconel 600 or 625, Monel 400, Tantalum, & Titanium. Polymers incl: Teflon™, Kynar®, PVC, & others**	Teflon™	Removable	2.5" (63 mm) to 6" (160 mm) Gauges, Switches, Recorders, Transducers/Transmitters	<b>Type T</b> Teflon Diaphragm Series
60 psi to 3000 psi	Threaded	316L SST, 304L SST, HASTELLOY® C or B, and Monel 400	316L SST, HASTELLOY® C, Tantalum, and Monel 400	Welded	2.5" (63 mm) to 6" (160 mm) Gauges, Switches, Recorders, Transducers/Transmitters	<b>Type XR</b> All Welded Gauge & Seal

\* Other Metals could include: Hastelloy C22, Hastelloy B, Inconel 625, Nickel, Steel, Alloy 20, C20, and Zirconium

\*\* Other Polymers could include: Teflon 15, Teflon (carbon filled), Teflon (graphite filled), CPVC, and Polypropylene.

# Transmitters

From top to bottom: Models IDT, 831, 675, 88, 851, SST, and 375.

PRESSURE

Pressure Range	Accuracy	Approvals	Process Connection	Output	Wetted Parts	Model
0 to 300 psi (0 to 690 ft water)	± (0.25% of FS) BFSL	Explosion Proof, Intrinsically Safe	1/2" NPT Female	4 to 20 mA	316L Stainless Steel	<b>88 – Field Adjustable</b>
0 to 500 psid, 0 to 6 psi thru 0 to 5000 psi	± (0.30% of FS) BFSL	Explosion Proof	1/2" NPT Female, 1/4" and 1/2" NPT Male	4 to 20 mA, 1 to 5 VDC, 0.8 to 3.2 VDC	316L Stainless Steel w/ optional HASTELLOY® C diaphragm	<b>831 – Differential and Low Power Options</b>
0 to 3 psi thru 0 to 5000 psi	± (0.25% of FS) BFSL	Explosion Proof, Intrinsically Safe	1/2" NPT or Flush Connection	4 to 20 mA	316L Stainless Steel w/ optional HASTELLOY® C diaphragm	<b>851 – Bench Adjustable</b>
Vacuum 0 to 5000 psi (Vacuum to 0 to 340 bar)	± (0.20% of FS) BFSL	Intrinsically Safe	1/4" or 1/2" NPT	4 to 20 mA, 0 to 5 VDC, 1 to 5 VDC, 1 to 6 VDC, 0.5 to 4.5 VDC	316L Stainless Steel w/ optional HASTELLOY® C or Monel diaphragm	<b>IDT</b>

SUBMERSIBLE LEVEL

Pressure Range	Accuracy	Approvals	Sensing Port	Electrical Connection	Wetted Parts	Model
0 to 150 psi (0 to 345 ft water)	± (0.25% of FS) BFSL	None – General Industrial	Delrin Snubnose	Polyurethane, Polyolefin, or Teflon Cable	316L Stainless Steel, Polyurethane (or Polyolefin or Teflon), Viton, Delrin	<b>SDT</b>
0 to 300 psi (0 to 690 ft water)	± (0.25% of FS) BFSL	None – General Industrial	Delrin or SST Snubnose, or Flush Mount	Polyurethane Cable Potted w/ Vent Tube	316L Stainless Steel, Polyurethane, Viton, Delrin	<b>375</b>
0 to 150 psi (0 to 345 ft water)	± (0.20% of FS) BFSL	None – General Industrial	Delrin Snubnose w/ .69" diameter	Polyurethane Cable Potted w/ Vent Tube	316L Stainless Steel, Polyurethane, Viton, Delrin	<b>SST Slim-Line</b>
0 to 300 psi (0 to 690 ft water)	± (0.25% of FS) BFSL	Intrinsically Safe	Protected Flush Cage, Nylon or SST Snubnose, or Flush Mount	Teflon or Polyurethane Cable (optional Potting and Vent Tube)	316L Stainless Steel, Polyurethane (or Teflon), Viton	<b>575 and 575 Protected Flush Cage</b>
0 to 60 psi (0 to 138 ft water)	± (0.25% of FS) BFSL	Intrinsically Safe	3.5" Diaphragm protected by 4.75" Cage	Polyurethane Cable Potted w/ Vent Tube	316L Stainless Steel, Polyurethane, Viton	<b>675 Shark Cage</b>



## Level Measurement System

The all-in-one customized LevelMate III meter displays data from any AMETEK submersible level transmitter, provides excitation voltage and transmits an analog signal for remote recording, alarm or submersible pump control functions. It is easy to calibrate by front panel adjustments.



LevelMate III



# Transducers



INDUSTRIAL

	Accuracy	Process Connection	Electrical Connection	Output	Wetted Parts	
0 to 3000 psi	± (0.20% of FS) BFSL	1/8 or 1/4 NPT or 7/16"-20 SAE	Cable, Din, Packard, Bendix or Conduit	0 to 100 mV	316L Stainless Steel or Brass	<b>ACT</b>
0 to 3000 psi	± (0.20% of FS) BFSL	1/8 or 1/4 NPT or 7/16"-20 SAE	Cable, Din, Packard, Bendix or Conduit	4 to 20 mA, 1 to 5 VDC, 1 to 6 VDC, 0 to 5 VDC	316L Stainless Steel or Brass	<b>DCT</b>
Vacuum to 10 000 psi	± (1.0% of FS) BFSL	1/4 NPT	9.4 mini DIN or 3-pin Packard	4 to 20 mA, 0 to 5 VDC	316L Stainless Steel	<b>ECPT10</b>
0 to 10 000 psi	± (0.50% of FS) BFSL	1/4 NPT Male, 7/16-20 UNF or G1/4 Male	M12 (5-pin)	Switch to 250 mA max for (PNP), or 200 mA max for (NPN)	17-4PH stainless steel	<b>PST360</b>
Vacuum to 5000 psi	± (0.25% of FS) BFSL	1/8 NPT	Packard Connector and 18" #20 AWG Wire	1 to 6 VDC	316L Stainless Steel	<b>SPT</b>
<b>Pressure Range</b>	<b>Specifications</b>					<b>Model</b>

NAVAL

	Accuracy	Process Connection	Electrical Connection	MIL Spec	Wetted Parts	
Vacuum to 10 000 psi, 0 to 400 psid	± (1.0% of FS) BFSL	7/16-20 Thread for 1/4" Tube	Mil-Spec Connectors with SS optional	QPL: MIL-D-24304B, MIL-P-24212C (SH)	316L Stainless Steel	<b>89</b>
Vacuum to 10 000 psi, 0 to 600 psid	± (1.0% of FS) BFSL	7/16-20 Thread for 1/4" Tube	Mil-Spec Connectors with SS optional	MIL-T-24742, MIL-STD-901D, MIL-STD-461, MIL-STD-167	316L Stainless Steel	<b>742</b>
<b>Pressure Range</b>	<b>Specifications</b>					<b>Model</b>



## Sta-Kool Cooling Element

The Sta-Kool protects pressure equipment by reducing the process temperature by the time the media gets inside the gauge, transmitter, transducer or switch.

From left to right: Models SPT, DCT, ACT, ECPT10, PST360, 89, and 742.



# Temperature

ANALOG & DIGITAL

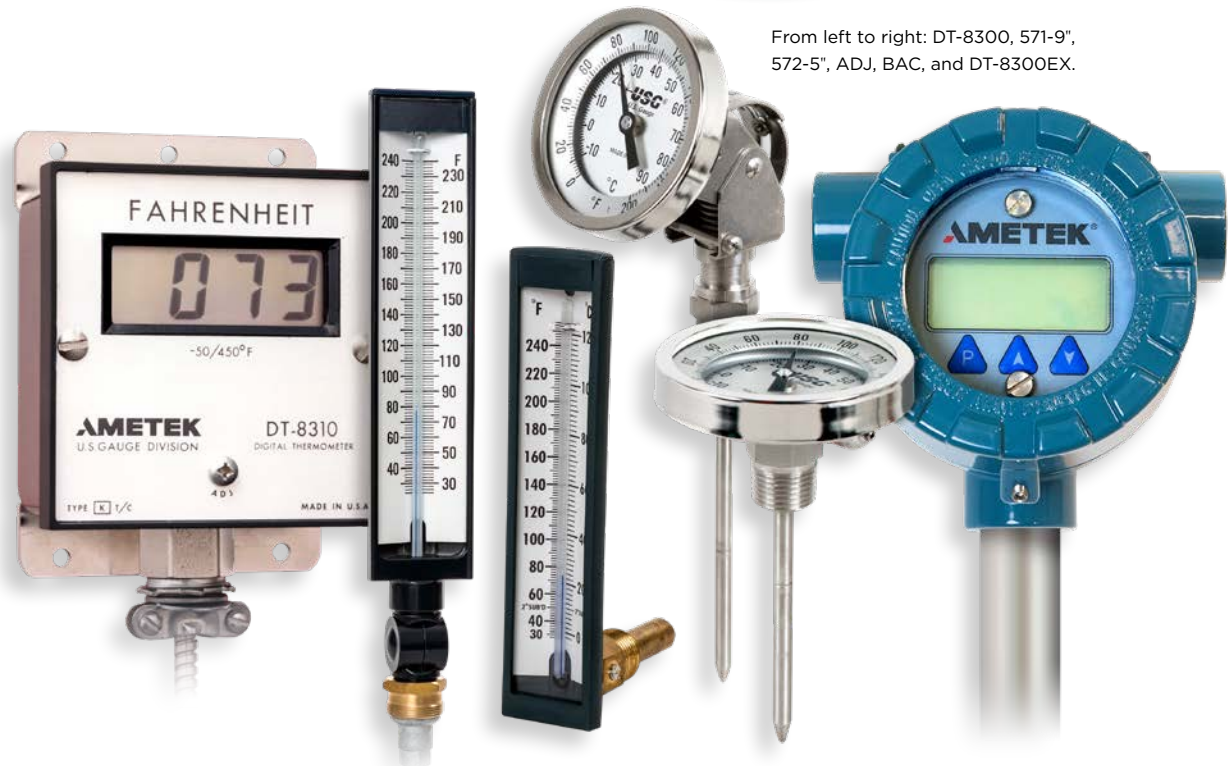
Pressure Range	Accuracy	Connection	Dial or Indicator	Lens	Housing	Model
30 to 240° F	± 1 scale division	1/2-14 NPT Lower Mount (571) Back Mount (572)	Magnifying glass tube; black temperature scale	Brass Bulb Shield	Cast Aluminum	<b>571, 572-5" Industrial Thermometer</b>
-40 to 300° F (multiple available ranges)	± 1 scale division	1.25"-18 Connecting Nut	Magnifying glass tube; black temperature scale	Cast Aluminum Bulb Shield	Cast Aluminum	<b>571-9" Industrial Thermometer</b>
0 to 1000° F (multiple available ranges)	± (1.0% of Full Span)	1/2-14 NPT	Cupped Anti-parallax Dial	Glass	304 Stainless Steel	<b>ADJ Bimetallic Thermometer</b>
0 to 1000° F (multiple available ranges)	± (1.0% of Full Span)	1/2-14 NPT	Cupped Anti-parallax Dial	Glass	304 Stainless Steel	<b>BAC Bimetallic Thermometer</b>
-50 to 1500° F	± (1.0% of FS)	1/2-14 NPT	3.5 Digit LCD Display 0.7" High Numerals	VALOX Bezel/Face	302 Stainless Steel	<b>DT-8300 Digital Thermometer</b>
-58 to 1832° F	± 1° C / 1.8° F	Thermowell, Wall, or Pipe Mount	3.5 Digit LCD Display 0.5" High Numerals	Tempered Glass	Aluminum or Stainless Steel	<b>DT-8300EX Explosion-proof Digital Thermometer</b>
	Specifications					

## TW-Thermowell

We recommend the use of a thermowell in conjunction with a bimetallic thermometer when the application involves a corrosive medium, high pressure, or high flow velocity. Perfect for applications requiring protection for unarmored liquid-in-glass test thermometers, or other temperature sensing elements with a maximum diameter of .25".



TW-Thermowell.



From left to right: DT-8300, 571-9", 572-5", ADJ, BAC, and DT-8300EX.

# Other Products

## Pneumatic Controllers

**A** METEK-PMT Model 40 Pneumatic Pressure Controllers automatically position a valve or other final control element to maintain process pressure at the desired set point. The Model 40 Pneumatic Controller is a rugged unit that works as a receiving controller that can control any process variable transmitted as a pneumatic signal.

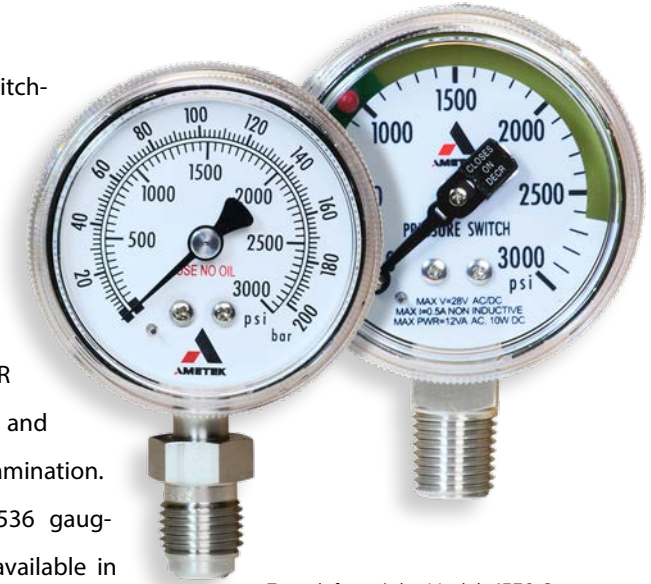


Model 40 Pneumatic Controllers.

- Meets EPA Quad Zero requirement.
- P, P+I, and PID control modes.
- Many outputs including 3-15 psi.
- 5" WC to 3000 psi ranges.
- Units available with an extensive list of options.

## Ultra High Purity Products

**O**ur high purity pressure gauges and switches are designed and manufactured for ultra high-purity gas distribution equipment used in semiconductor and electronic manufacturing. These instruments are compatible with many toxic and corrosive gases. Welded male or female face seal connections (MVCR & FVCR) provide a threadless pressure seal and virtually eliminate a major source of contamination. Also available in NPT connections. Model 1536 gauges and Model IPS 300 pressure switches are available in both low mount and center back mount configurations.



From left to right: Models 1536 Gauge and IPS300 Pressure Switch.

## A Range of Other Capabilities

- Mounting gauges, transmitters, and switches on diaphragm seals.
- Quick-ship gauges and seals.
- NIST Calibration Certificates for gauges or seals.
- Certificate of Conformance.
- NACE certifications for gauges or seals.
- MIL certifications for seals and gauges.
- Liquid filling of gauges and seals.
- Oxygen cleaning of gauges or seals.





**USA, Pennsylvania**  
Tel +1 (215) 674 1234

**USA, Florida**  
Tel +1 (800) 527 9999

**USA, California**  
Tel +1 (800) 444 1850

**India**  
Tel +91 22 2836 4750

**Singapore**  
Tel +65 6484 2388

**China, Shanghai**  
Tel +86 5868 5111

**China, Beijing**  
Tel +86 10 8526 2111-19/24/25

**United Kingdom**  
Tel +44 (0) 1243 833 302

**France**  
Tel +33 (0) 30 68 89 40

**Germany**  
Tel +49 (0) 2159 9136 510

**Denmark**  
Tel +45 4816 8000

[www.ametekusg.com](http://www.ametekusg.com)



No part of this document may be reproduced or modified in any form or by any means, electronic or mechanical, without express written permission from AMETEK Incorporated.